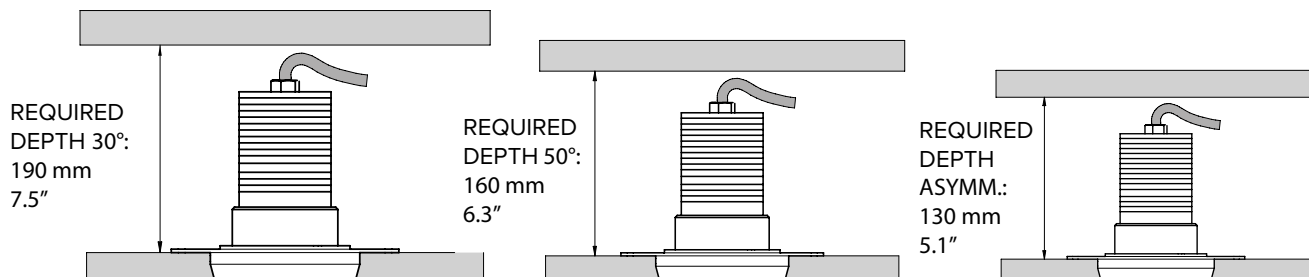


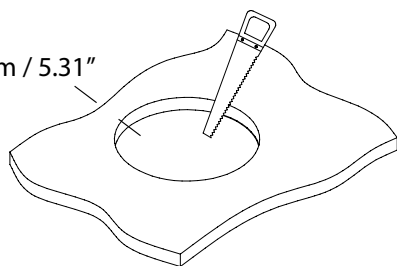
INSTALLATION

1 EN: REQUIRED DEPTH IT: PROFONDITÀ RICHIESTA FR: PROFONDEUR NÉCESSAIRE

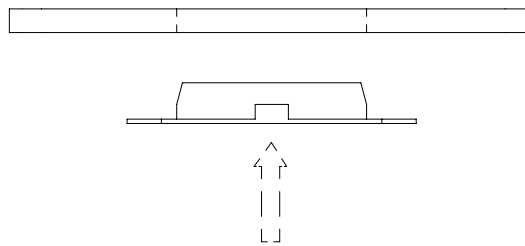


2 EN: Make a hole in the plasterboard. IT: Fare un foro nel cartongesso. FR: Faire un trou dans la plaque de plâtre.

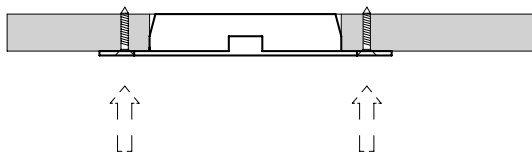
Ø135 mm / 5.31"



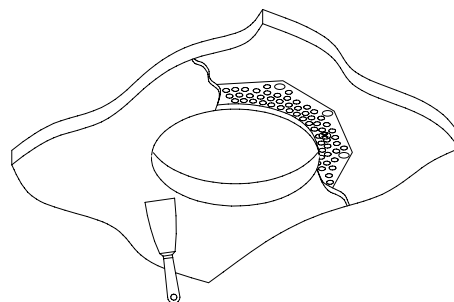
3 EN: Insert the mounting frame in the hole. IT: Inserire la controcassa nel foro. FR: Installer la boîte d'encastrement dans le trou.



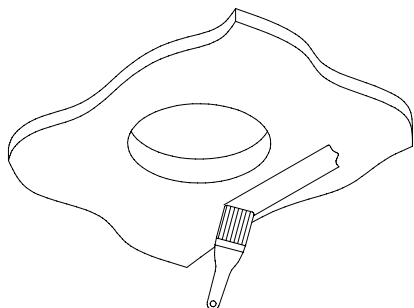
4 EN: Fix the mounting frame to the plasterboard by using self-threading screws. Make sure the head of the screws being completely within the plasterboard. IT: Fissare il telaio di montaggio al cartongesso con viti auto-filettanti. Assicurarsi che la testa delle viti sia completamente all'interno del cartongesso. FR: Fixer la BOÎTIER d'encastrement sur la plaque de plâtre en utilisant vis autotaraudeuses. S'assurer que les têtes des vis soient complètement dans la plaque de plâtre.



5 EN: Plaster and sand. IT: Stuccare e carteggiare. FR: Reboucher et poncer.



6 EN: Paint. IT: Dipingere. FR: Peindre.



7 EN: Clean the inside of the mounting frame. IT: Pulire l'interno della controcassa. FR: Nettoyer l'intérieur de la plaque de plâtre.

