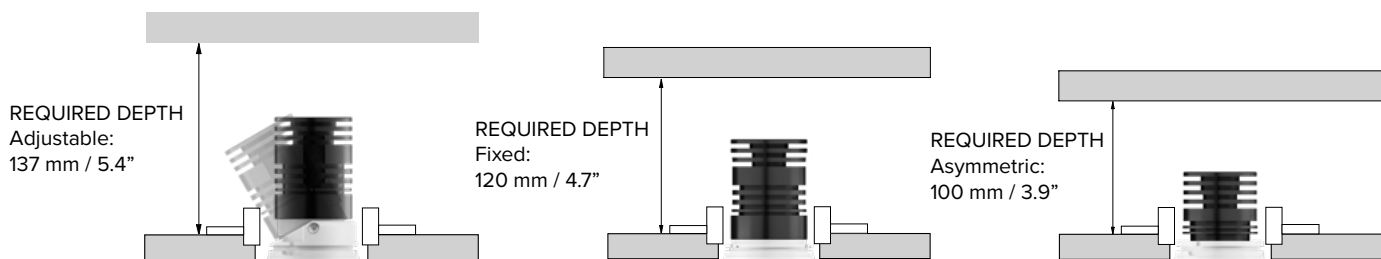
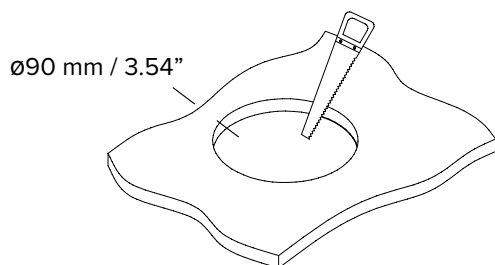


INSTALLATION

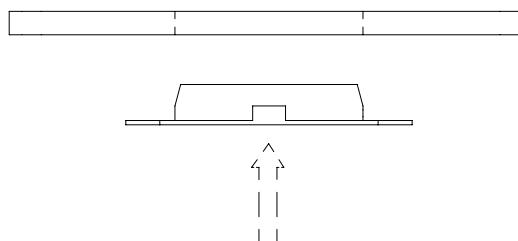
1 EN: REQUIRED DEPTH IT: PROFONDITÀ RICHIESTA FR: PROFONDEUR NÉCESSAIRE



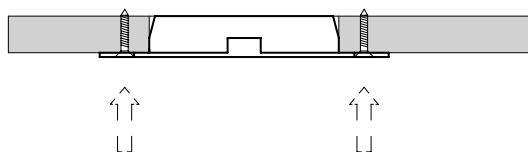
2 EN: Make a hole in the plasterboard. IT: Fare un buco nel cartongesso. FR: Faire un trou dans la plaque de plâtre.



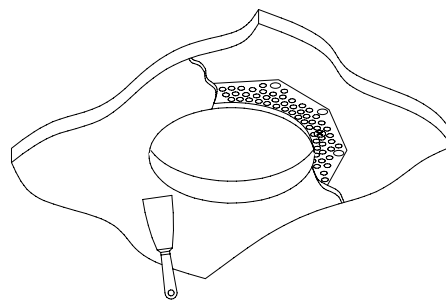
3 EN: Insert the mounting frame in the hole. IT: Inserire la controcassa nel foro. FR: Installer le boîtier dans le trou.



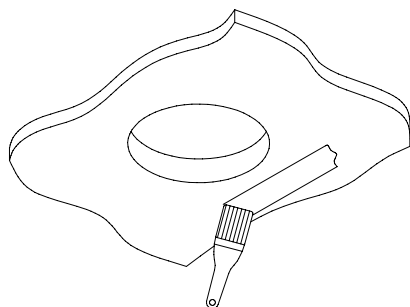
4 EN: Fix the mounting frame to the plasterboard by using self-threading screws. Make sure the head of the screws being completely within the plasterboard. IT: Fissare la scatola di cartongesso alla lastra in gesso con viti autofilettanti. Assicurarsi che la testa delle viti sia completamente all'interno della lastra in gesso. FR: Fixer la BOÎTIER d'encastrement sur la plaque de plâtre en utilisant vis autotaraudeuses. S'assurer que les têtes des vis soient complètement dans la plaque de plâtre.



5 EN: Plaster and sand. IT: Stuccare e carteggiare. FR: Reboucher et poncer.



6 EN: Paint. IT: Dipingere. FR: Peindre.



7 EN: Clean the inside of the mounting frame. IT: Pulire l'interno della controcassa. FR: Nettoyer l'intérieur de la plaque de plâtre.

