

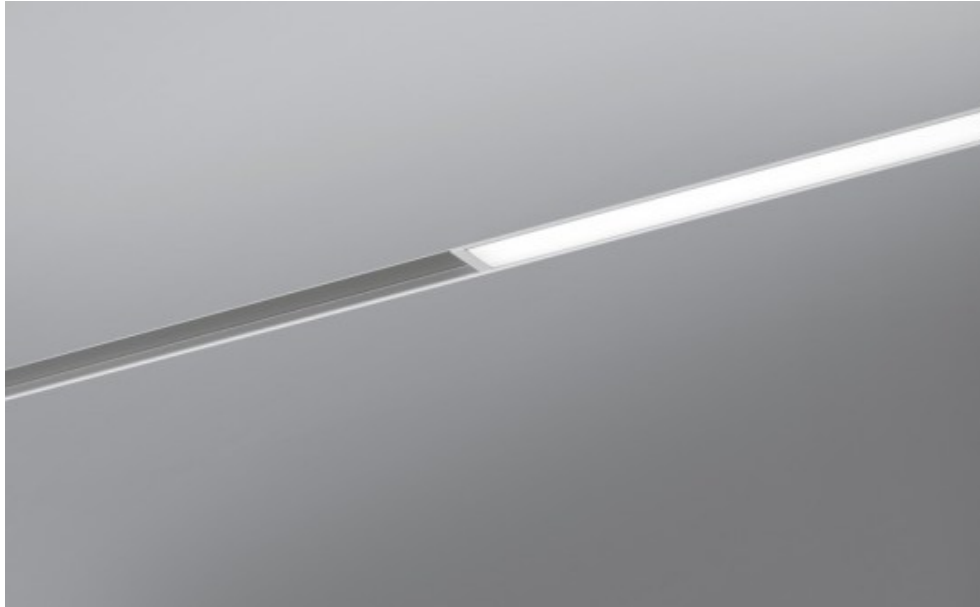
# 3D INTERIOR DESIGN

## Innovative Lighting Fixture on a Low-Voltage Power Magnetic Track by B Light

Posted in: [Design and More](#) on: December 15

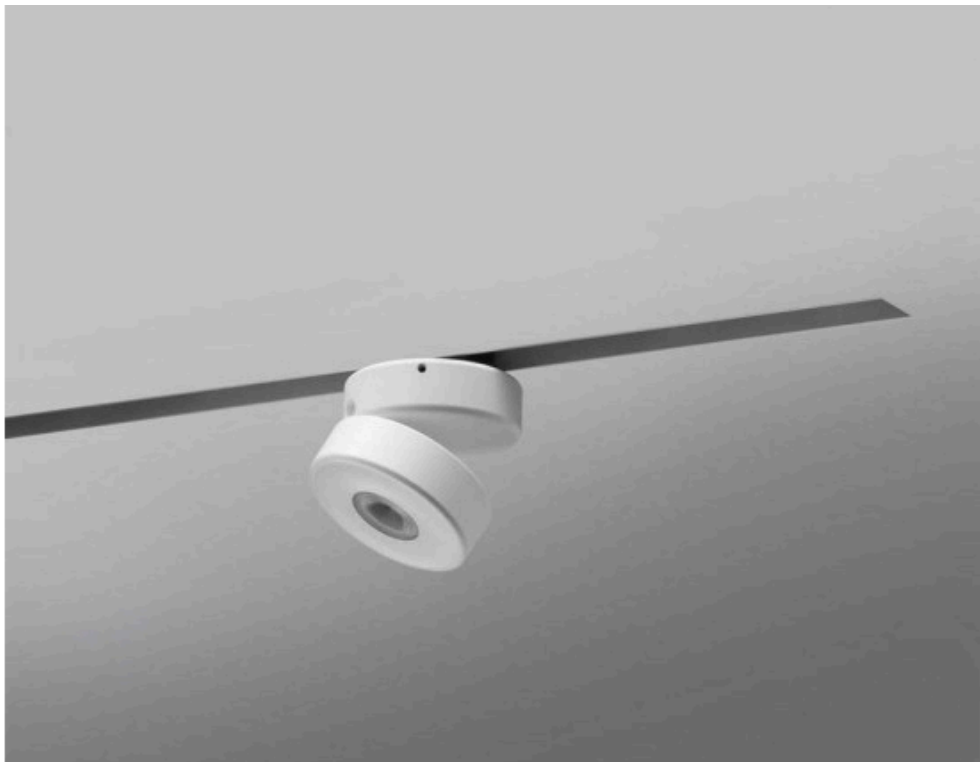


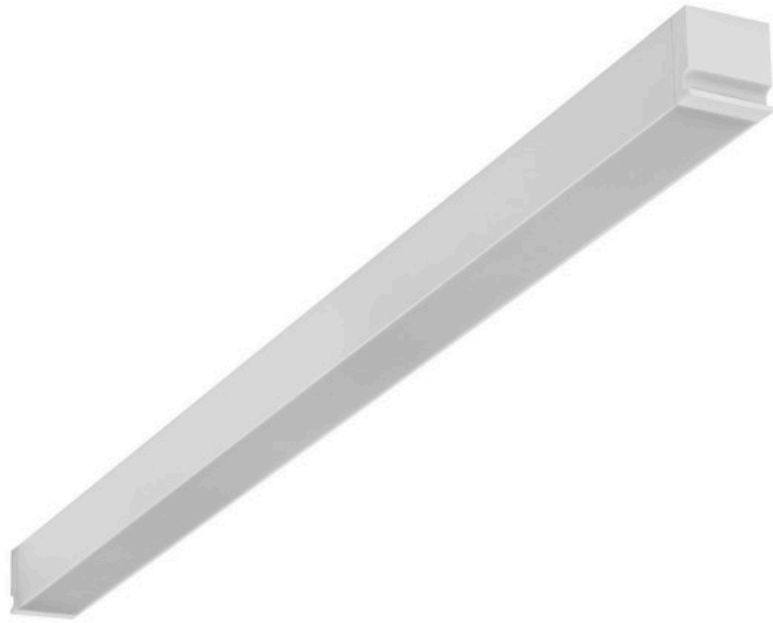
Italian company B Light presents an innovative lighting fixture: Inserto Small Track, an original unit on a low-voltage power magnetic track. Inserto Small Track combines practical solutions with creativity, and is the result of the analysis of its scope of application; it develops thanks to the ability and creativity of the designer, reproducing light in its various facets. This innovative luminaire is characterized by a minimalistic design, that enables it to perfectly adapt to any modern environment.



Made of extruded aluminum with PVC end caps, this B Light luminaire has an even and perfectly uniform light distribution across its entire surface. It is available with different colour temperatures: warm white 2700K and 3000K, and natural white 4100K; it can last up to 30.000 hours at 70% of its luminous flux. Inserto Small Track can be installed by means of The Magnum Track, a magnet track that can be ceiling recessed, in-line or suspended, in order to highlight the essence of this lighting fixture.

With an extruded aluminum frame and milled aluminum end caps, this track is available in three different versions, depending on the different installation needs: The Magnet Track F is in-line recessed, and is fixed through clamps, The Magnet Track CL is ceiling-mounted or wall-mounted, while The Magnet Track SD is suspended. Every version of The Magnum Track is available in two colours: white and anthracite. [Photos and information provided via e-mail by B Light]





The post Innovative Lighting Fixture on a Low-Voltage Power Magnetic Track by B Light appeared first on Freshome.com.

Source:: Fresh Home