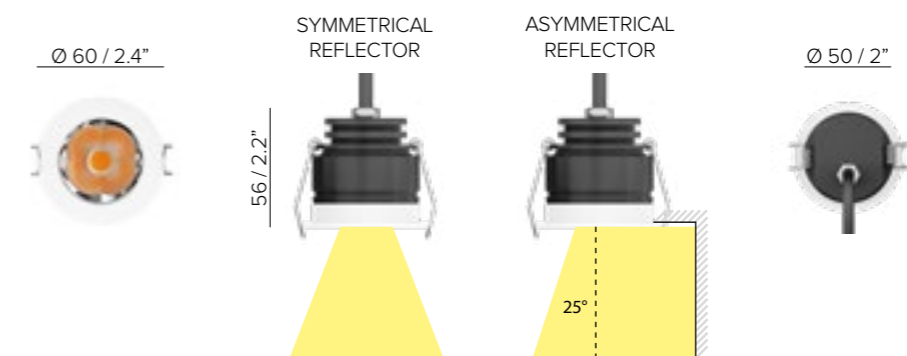




# ATRIA 60 P <sup>NEW</sup>

## SPECIFICATIONS

- base code 66098
- typology Compact glare free downlight with flat trim and symmetrical or asymmetrical (downlight 25° and wallwasher) light distribution
- mounting In plasterboard using springs (included)
- diameter 60 mm / 2.4"
- height 56 mm / 2.2"
- required depth 70 mm / 2.8"
- ceiling cut out Plasterboard: 52 mm / 2.05"
- construction Fixture and bezel: turning and milling aluminum.  
Reflector: polycarbonate. Protective glass in PMMA or softening glass complete with silicone gasket
- finishes Powder coated. Heat sink anodized
- ingress protection IP30, IP44 or IP66. North America dry, damp or wet location
- lamp type COB. Remote power supply not included
- lamp wattage 6W at 350 mA. **Vf 17,8V DC.**  
Tunable white: Maximum wattage 6W (CH1 + CH2 max 6W, one channel max 6W)
- lamp lumens 780lm
- delivered lumens IP30: 675lm (50°) - 700lm (70°) - 570lm (asymmetrical)  
IP44 / IP66: 610lm (50°) - 630lm (70°) - 510lm (asymmetrical)
- lumen maintenance 50.000h L90
- beam 50°, 70° or asymmetrical reflector (downlight 25° and wallwasher)
- kelvin 2700K CRI93, 3000K CRI93, 4000K CRI93 / 3 step MacAdam ellipse or Tunable white (1800K - 4000K) CRI93
- special features Safe wiring - Two wires dimming.  
Designed with symmetrical and asymmetrical reflectors, delivers glare free homogeneous light. UGR<19 (50°), UGR<25 (70°).  
The asymmetrical reflector offers longitudinal cut-off and delivers homogeneous light from the upper edge of the wall to the floor with no visible dark zones
- dimming options Push button, potentiometer, 0-10V, DALI, DMX, KNX.  
Dimming options depend on power supply and additional control units to be separately ordered as accessories
- listings CE, ETL listed for wet location



# ASYMMETRICAL DOWNLIGHTS

## AVAILABLE OPTIONS FOR DIFFERENT CEILING HEIGHTS



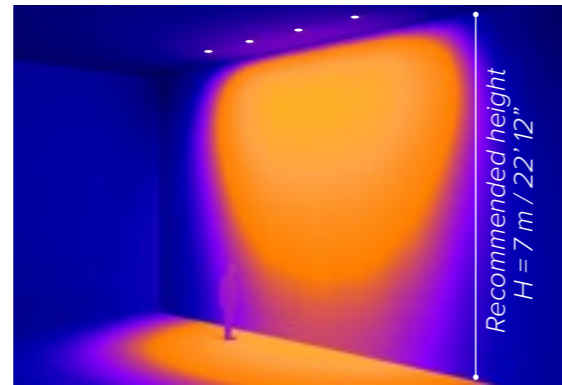
**ATRIA X3 R**  
30W, 2440lm delivered

SEE PAGE 459



**INSIDE 120 R**  
30W, 2440lm delivered

SEE PAGE 391



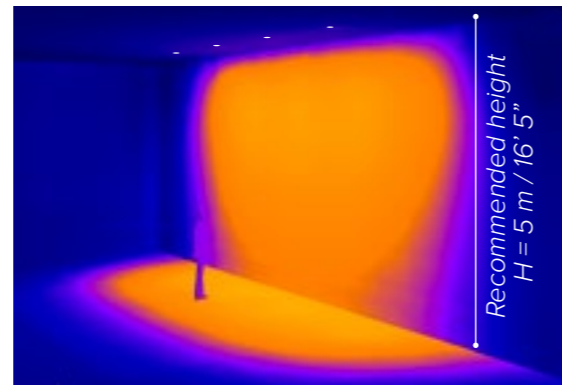
**ATRIA X3 R**  
23W, 2025lm delivered

SEE PAGE 459



**INSIDE 120 R**  
23W, 2025lm delivered

SEE PAGE 391



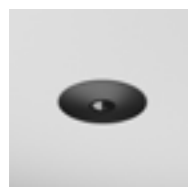
**ATRIA XS R**  
10W, 870lm delivered

SEE PAGE 437



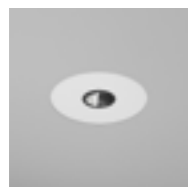
**INSIDE 75 R**  
10W, 870lm delivered

SEE PAGE 381



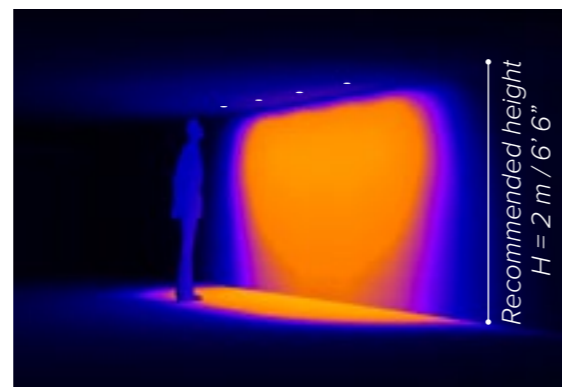
**DOT 45**  
4W, 220lm delivered

SEE PAGE 425



**INSIDE 40 R**  
4W, 220lm delivered

SEE PAGE 367



20lx 50lx 100lx 200lx

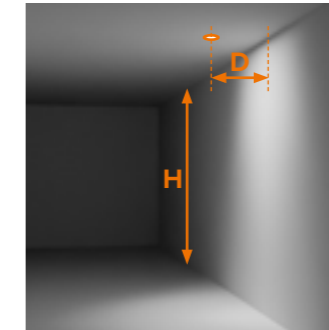
# ATRIA 60 P

## INSTALLATION GUIDE FOR THE ASYMMETRICAL DOWNLIGHT (DOWNLIGHT 25° AND WALLWASHER)

FOR A GOOD UNIFORMITY OF LIGHT ON THE WALL, FOLLOW THESE RULES:

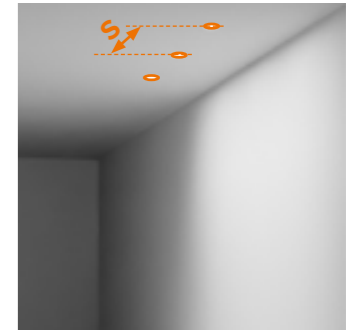
1

The **distance from the wall (D)** shall be minimum H/5 and maximum H/3



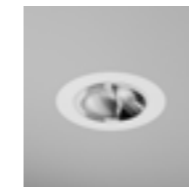
2

The **spacing between luminaires (S)** shall be minimum the distance (D) from the wall and maximum twice the distance (D x 2) from the wall



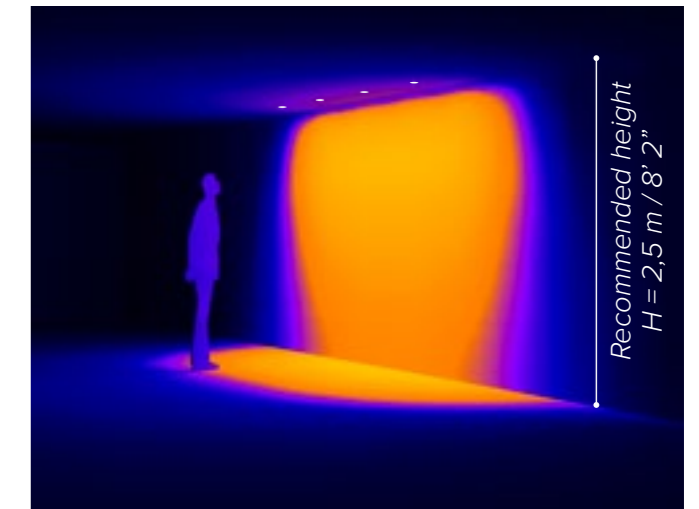
**ATRIA 60 P**  
6W, 570lm delivered

H 2,5 m 8' 2"	D <sub>MIN</sub> 0,5 m 1' 7"	S <sub>MIN</sub> 0,5 m 1' 7"
		S <sub>MAX</sub> 1 m 3' 3"
	D <sub>MAX</sub> 0,8 m 2' 7"	S <sub>MIN</sub> 0,8 m 2' 7"
		S <sub>MAX</sub> 1,6 m 5' 3"



**INSIDE 60 R**  
6W, 570lm delivered

SEE PAGE 375



20lx 50lx 100lx 200lx

Since every project is different, use this installation guide as a starting point for your lighting design. To further test the desired effect on your project, use the **photometric files** available on B LIGHT's website.

# ATRIA 60 P

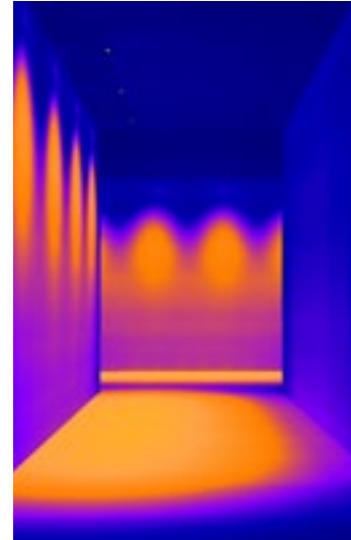
ASYMMETRICAL REFLECTOR (DOWNLIGHT 25° AND WALLWASHER)

# ATRIA 60 P

ORDER CODE

CONVENTIONAL DOWNLIGHTS

B LIGHT PLUS



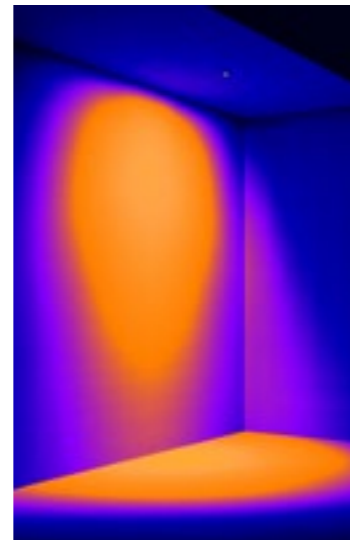
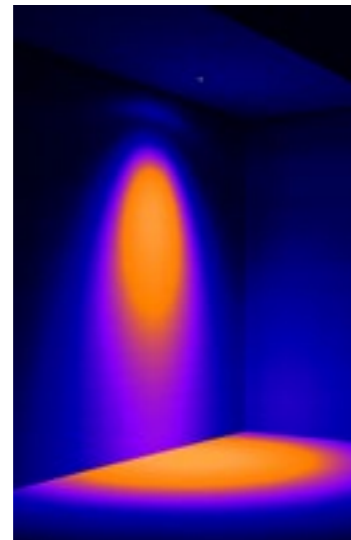
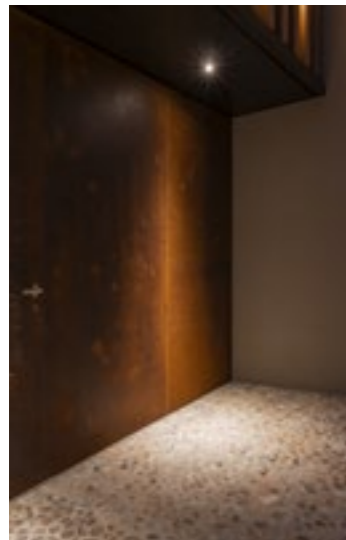
15lx 30lx 60lx 150lx

15lx 30lx 60lx 150lx

MAKE YOUR SPACES  
LOOK BIGGER

CONVENTIONAL DOWNLIGHTS

B LIGHT PLUS



15lx 30lx 60lx 150lx

15lx 30lx 60lx 150lx

BASE CODE

66098

A . POWER SUPPLY

L 350 mA power supply NOT included

U listed 350 mA power supply NOT included

B . KELVIN

4 4000K CRI93

5 3000K CRI93

8 2700K CRI93

7 tunable white 1800K - 4000K CRI93

C . BEAM

5 flood 50°

G flood 50°, softening glass

8 wide flood 70°

H wide flood 70°, softening glass

A chrome asymmetrical

B white asymmetrical

C black asymmetrical

BASE CODE

Example: **66098 L 8 A 6 C = 66098-L8A6C**

D . FINISHES

6 white RAL 9003

2 black RAL 9005

F golden bronze

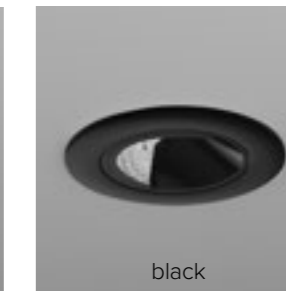
E . OTHER

A IP30

B IP44

C IP66

ASYMMETRICAL BEAM



ACCESSORIES

REQUIRED ACCESSORIES - NOT INCLUDED

Power supply 350 mA max No. fixtures

code	output power	input voltage / frequency	IP	dimensions mm
69107	ON/OFF, 10W / max 1	198-264V	50-60Hz IP20	L100xW43XH23
69090	1-10V, 18W / max 2	99-264V	50-60Hz IP20	L120xW52XH22
69079	DALI, 15W / max 2	110-240V	50-60Hz IP20	L120xW52xH22
69205	DALI, 17W / max 2	99-264V	50-60Hz IP67	L122xW54xH26

Power supply for Tunable white 350 mA max No. fixtures

69118	DALI DT8, 17,5W / max 2	198-264V	50-60Hz IP20	L123xW79XH30
-------	-------------------------	----------	--------------	--------------

Class 2 power supply 350 mA

Consult **B LIGHT North America**  
Lighting Group Network  
T: 212.775.6363  
E: info@lightinggroupnetwork.com

Power supply selection

DC MIN Output (Vf)	LED (Vf)	DC MAX Output (Vf)
< 17,8V	< 17,8V	< 17,8V