



ATRIA XS R ^{NEW}

SPECIFICATIONS

base code	66096
typology	Glare free downlight with recessed trim and symmetrical or asymmetrical (downlight 25° and wallwasher) light distribution
mounting	In plasterboard using springs (included)
diameter	78 mm / 3.1"
height	Downlight: 105 mm / 4.2". Asymmetrical downlight: 78 mm / 3.1"
required depth	Downlight: 120 mm / 4.7". Asymmetrical downlight: 100 mm / 3.9"
ceiling cut out	67 mm / 2.64"
construction	Fixture and flange: turning and milling aluminum. Reflector: polycarbonate. Protective glass in PMMA or softening glass complete with silicone gasket
finishes	Powder coated. Heat sink anodized
ingress protection	IP30, IP44 or IP66. North America dry, damp or wet location
lamp type	COB. Remote power supply not included
lamp wattage	10W at 500mA. Vf 17,8V DC. Tunable white: Maximum wattage 10W (CH1 + CH2 max 10W, one channel max 10W)
lamp lumens	1150lm
delivered lumens	IP30: 850lm (30°) - 930lm (50°) - 970lm (70°) - 790lm (asymmetrical) IP44 / IP66: 760lm (30°) - 840lm (50°) - 870lm (70°) - 710lm (asymmetrical)
lumen maintenance	50.000h L90
beam	30°, 50°, 70° or asymmetrical reflector (downlight 25° and wallwasher)
kelvin	2700K CRI93, 3000K CRI93, 4000K CRI93 / 3 step MacAdam ellipse or Tunable white (1800K - 4000K) CRI93
special features	Safe wiring - Two wires dimming. Designed with symmetrical and asymmetrical reflectors, delivers glare free homogeneous light. UGR<10 (30°), UGR<19 (50°), UGR<25 (70°). The asymmetrical reflector offers longitudinal cut-off and delivers homogeneous light from the upper edge of the wall to the floor with no visible dark zones
dimming options	Push button, potentiometer, 0-10V, DALI, DMX, KNX. Dimming options depend on power supply and additional control units to be separately ordered as accessories
listings	CE, ETL listed for wet location



IP30 IP44 IP66
symmetric asymmetric
120 mm / 4.7" 100 mm / 3.9" 67 mm / 2.64" 0.75 kg / 1.5 lbs
CE ETL

ASYMMETRICAL DOWNLIGHTS

AVAILABLE OPTIONS FOR DIFFERENT CEILING HEIGHTS



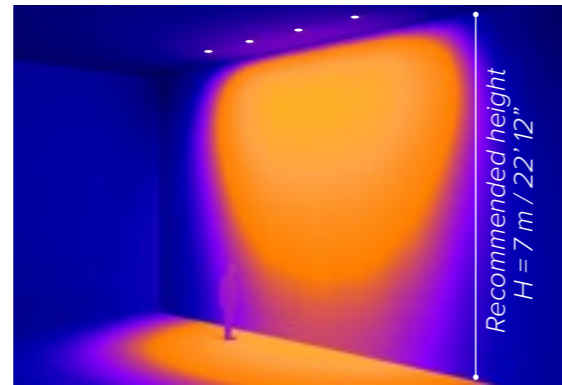
ATRIA X3 R
30W, 2440lm delivered

SEE PAGE 459



INSIDE 120 R
30W, 2440lm delivered

SEE PAGE 391



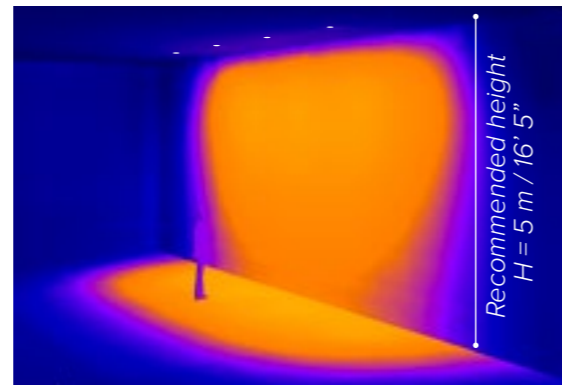
ATRIA X3 R
23W, 2025lm delivered

SEE PAGE 459



INSIDE 120 R
23W, 2025lm delivered

SEE PAGE 391



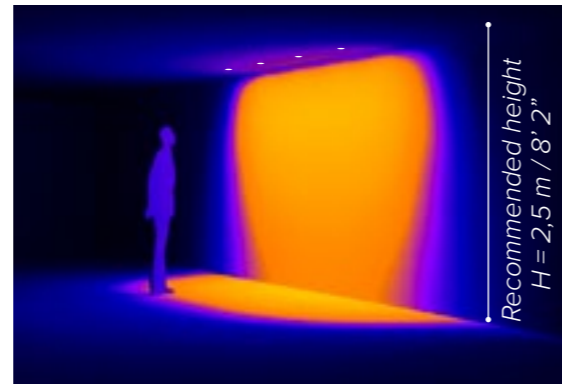
ATRIA 60 P
6W, 510lm delivered

SEE PAGE 431



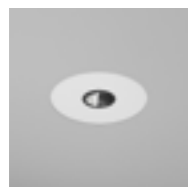
INSIDE 60 R
6W, 570lm delivered

SEE PAGE 375



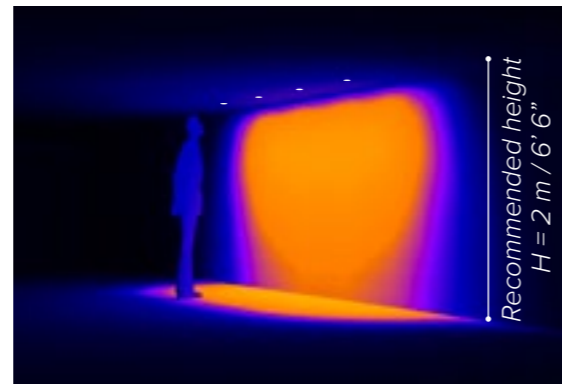
DOT 45
4W, 220lm delivered

SEE PAGE 425



INSIDE 40 R
4W, 220lm delivered

SEE PAGE 367



20lx 50lx 100lx 200lx

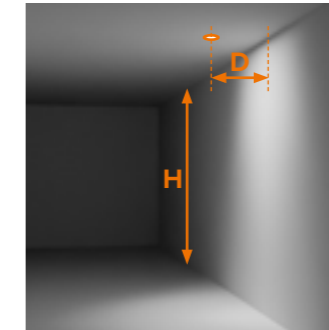
ATRIA XS R

INSTALLATION GUIDE FOR THE ASYMMETRICAL DOWNLIGHT (DOWNLIGHT 25° AND WALLWASHER)

FOR A GOOD UNIFORMITY OF LIGHT ON THE WALL, FOLLOW THESE RULES:

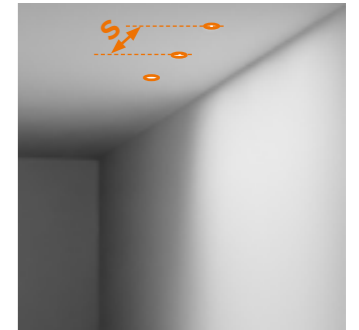
1

The **distance from the wall (D)** shall be minimum H/5 and maximum H/3



2

The **spacing between luminaires (S)** shall be minimum the distance (D) from the wall and maximum twice the distance (D x 2) from the wall



ATRIA XS R
10W, 870lm delivered

H 3 m 9' 10"	D _{MIN} 0,6 m 1' 11"	S _{MIN} 0,6 m 1' 11"
		S _{MAX} 1,2 m 3' 11"
	D _{MAX} 1 m 3' 3"	S _{MIN} 1 m 3' 3"
		S _{MAX} 2 m 6' 7"



20lx 50lx 100lx 200lx

Since every project is different, use this installation guide as a starting point for your lighting design. To further test the desired effect on your project, use the **photometric files** available on B LIGHT's website.

ATRIA XS R

ACCESSORIES

BASE CODE

66096



A . POWER SUPPLY

- L** 500 mA power supply NOT included
- U**  listed 500 mA power supply NOT included

B . KELVIN

- 4** 4000K CRI93
- 5** 3000K CRI93
- 8** 2700K CRI93
- 7** tunable white 1800K - 4000K CRI93

C . BEAM

- 4** spot 30°
- F** spot 30°, softening glass 
- 5** flood 50°
- G** flood 50°, softening glass
- 8** wide flood 70°
- H** wide flood 70°, softening glass
- A** chrome asymmetrical 
- C** black asymmetrical

BASE CODE A B C D E
 Example: **66096 L 8 A 6 C = 66096-L8A6C**

D . FINISHES

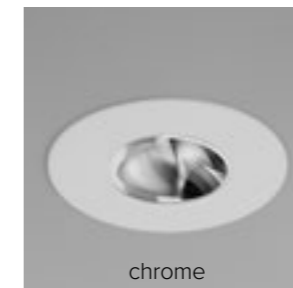
- 2** black RAL 9005 

- 6** white RAL 9003 

E . OTHER

- A** IP30
- B** IP44
- C** IP66

ASYMMETRICAL BEAM



ASYMMETRICAL REFLECTOR: DOWNLIGHT 25° AND WALLWASHER

ATRIA XS R

ACCESSORIES

REQUIRED ACCESSORIES - NOT INCLUDED

	code	output power	input voltage / frequency	IP	dimensions mm
Power supply 500 mA max No. fixtures	69109	ON/OFF, 10W / max 1	198-264V	50-60Hz IP20	L100xW43XH23
	69091	1-10V, 20W / max 2	99-264V	50-60Hz IP20	L120xW52XH22
	69080	DALI, 20W / max 2	220-240V	50-60Hz IP20	L120xW52xH22
	69206	DALI, 24W / max 2	99-264V	50-60Hz IP67	L122xW54xH26
Power supply for Tunable white 500 mA max No. fixtures	69119	DALI DT8, 25W / max 2	198-264V	50-60Hz IP20	L123xW79XH30
Class 2 power supply 500 mA	Consult B LIGHT North America Lighting Group Network T: 212.775.6363 E: info@lightinggroupnetwork.com				

Power supply selection		
DC MIN Output (Vf)	LED < 17,8V DC (Vf)	DC MAX Output (Vf)



ASYMMETRICAL REFLECTOR: DOWNLIGHT 25° AND WALLWASHER