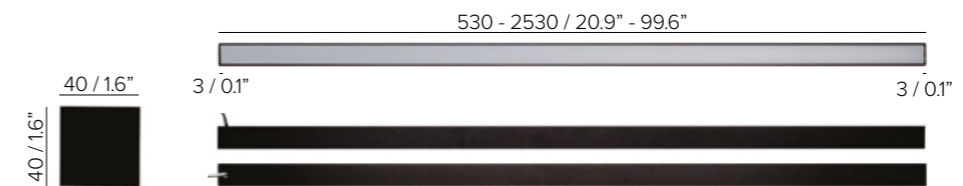


INSERTO MEDIUM 40 CL INSERTO MEDIUM 40 CL SYSTEM

SPECIFICATIONS

base code	645
typology	Compact, linear surface luminaire with symmetrical light distribution
mounting	On surface with suitable screws (included)
length	Available in nine lengths, see next page for complete data
height	40 mm / 1.6"
width	40 mm / 1.6"
construction	Extruded aluminum fixture. End caps in turning and milling aluminum. Diffuser in polycarbonate
finishes	Anodized or powder coated when painted
ingress protection	IP40. North America dry location
lamp type	Linear LED array on printed circuit board. PCB L 250 mm / 9.8". PCB increment 250 mm / 9.8" - 2500 mm / 98.4" max. Custom dimensions on request. Remote power supply not included
LED pitch	4,1 mm / 0.2" (480 LEDs per meter)
lamp wattage	From 20W to 100W at 48V DC. North America 24V DC
lamp lumens	PCB L 250: 830lm
delivered lumens	PCB L 250: 585lm (3000K CRI93, satin) - 740lm (3000K CRI93, microprismatic)
lumen maintenance	50.000h L90
beam	Diffused or microprismatic
kelvin	2700K CRI93, 3000K CRI93 and 4000K CRI93 / 3 step MacAdam ellipse
special features	Reverse polarity protection - Two wires dimming. Diffuse and completely homogenous light distribution across the entire surface
dimming options	Push button, potentiometer, 1-10V, DALI, DMX. Dimming options depend on power supply and additional control units to be separately ordered as accessories
listings	CE, ETL listed for dry location



DIFFUSE AND COMPLETELY HOMOGENOUS LIGHT DISTRIBUTION



* weight based on 250 mm / 9.8"

INSERTO MEDIUM 40 CL

ORDER CODE

BASE CODE	A1 . LENGTH	A . POWER SUPPLY	B . KELVIN
645	26 530 mm 20 W	8 48V DC power supply NOT included R listed 24V DC power supply NOT included	4 4000K CRI93 5 3000K CRI93 8 2700K CRI93
	27 780 mm 30 W		
	28 1030 mm 40 W		
	29 1280 mm 50 W		
	30 1530 mm 60 W		
	31 1780 mm 70 W		
	32 2030 mm 80 W		
	33 2280 mm 90 W		
	34 2530 mm 100 W		

Example: BASE CODE A1 A B C D
645 **26** **8** **5** **A** **6** = **64526-85A6**

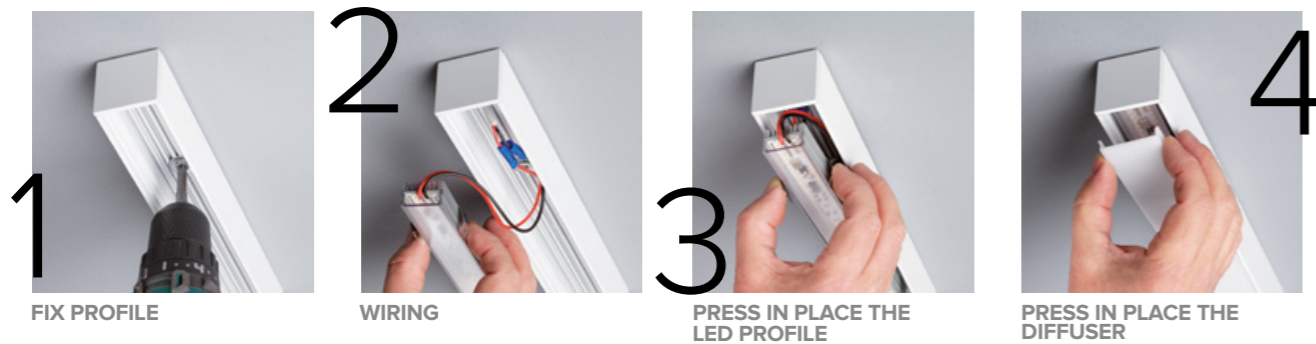
C . PRODUCT OPTICS

- A** satin flush diffuser
- B** microprismatic flush diffuser

D . FINISHES

- 1** grey anodized
- 2** black RAL 9005
- 6** white RAL 9003

MOUNTING: TWO PROFILES IN ONE FIXTURE FOR EASY FUTURE RE-LAMPING



INSERTO MEDIUM 40 CL SYSTEM

ORDER CODE

BASE CODE	A1 . LENGTH	A . POWER SUPPLY	B . KELVIN	
645	starting inserto¹		8 48V DC power supply NOT included R listed 24V DC power supply NOT included	4 4000K CRI93 5 3000K CRI93 8 2700K CRI93
	38 527 mm 20 W			
	39 777 mm 30 W			
	40 1027 mm 40 W			
	41 1277 mm 50 W			
	42 1527 mm 60 W			
	43 1777 mm 70 W			
	44 2027 mm 80 W			
	45 2277 mm 90 W			
	46 2527 mm 100 W			
	middle inserto²			
	50 505 mm 20 W			
	51 755 mm 30 W			
	52 1005 mm 40 W			
	53 1255 mm 50 W			
	54 1505 mm 60 W			
	55 1755 mm 70 W			
	56 2005 mm 80 W			
	57 2255 mm 90 W			
	58 2505 mm 100 W			
	inner corner module²			
	63 285x285 mm 20 W			
	90° corner module²			
	64 260x260 mm 20 W			

Example: BASE CODE A1 A B C D
645 **38** **8** **5** **A** **6** = **64538-85A6**

¹ one end cap only
² no end caps

C . DIFFUSER

- A** satin flush diffuser
- B** microprismatic flush diffuser

D . FINISHES

- 1** grey anodized
- 2** black RAL 9005
- 6** white RAL 9003

INSERTO MEDIUM 40 CL INSERTO MEDIUM 40 CL SYSTEM

ACCESSORIES

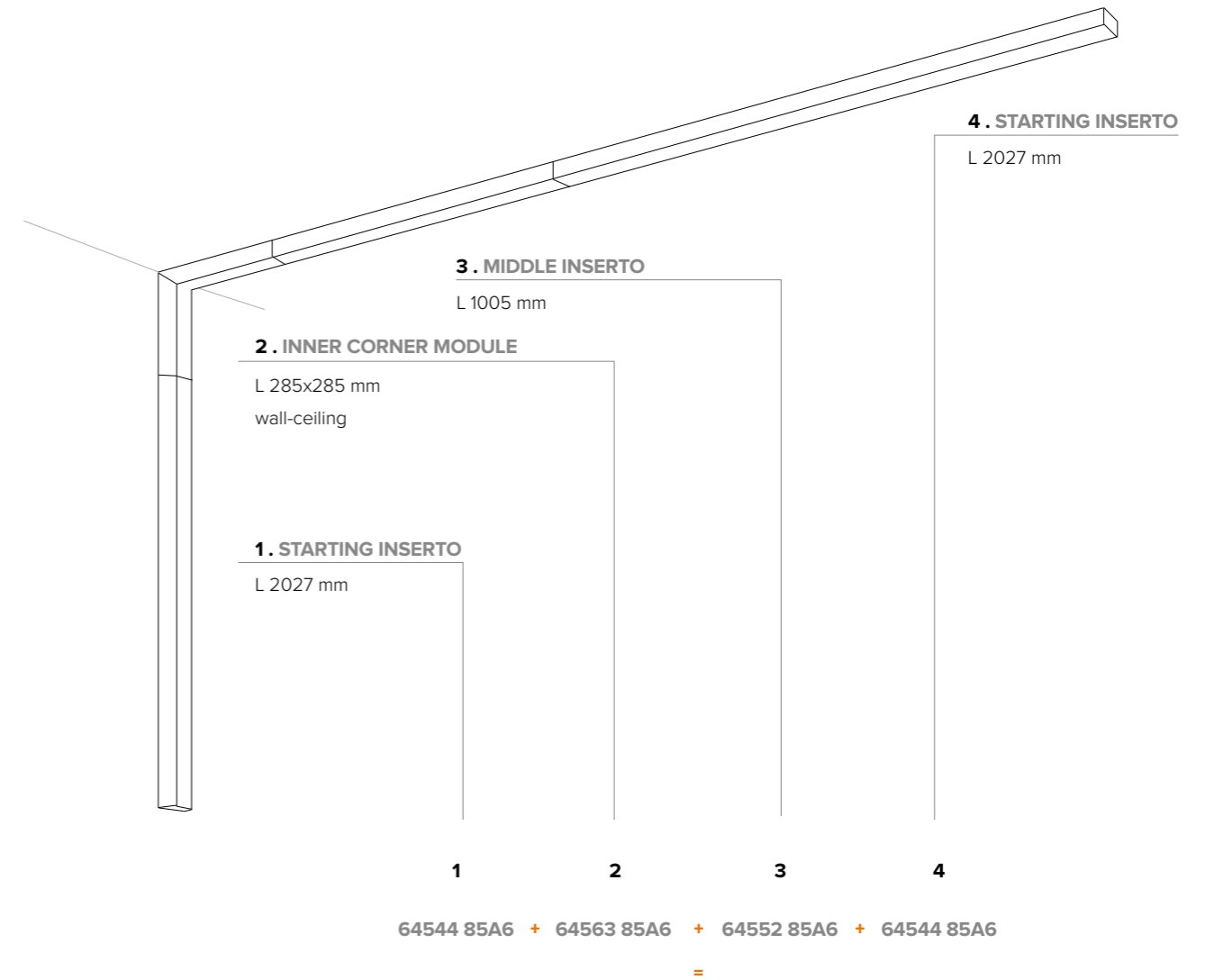
REQUIRED ACCESSORIES - NOT INCLUDED

Power supply	code	output power	input voltage / frequency	IP	dimensions mm
48V DC, ON/OFF*	69180	30W	90-264V	47-63Hz IP20	L160xW46xH30
	69181	40W	90-305V	47-63Hz IP67	L163xW43xH32
	69182	60W	90-305V	47-63Hz IP67	L163xW43xH32
	69183	100W	90-264V	47-63Hz IP20	L201xW70xH35
	69188	150W	90-305V	47-63Hz IP67	L228xW68xH39
	69189	240W	90-305V	47-63Hz IP67	L244xW68xH39
48V DC, 1-10V ¹⁾	69185	40W	90-305V	47-63Hz IP67	L171xW62xH37
	69186	60W	90-305V	47-63Hz IP67	L171xW62xH37
	69187	100W	90-305V	47-63Hz IP67	L220xW68xH39
	69188	150W	90-305V	47-63Hz IP67	L228xW68xH39
	69189	240W	90-305V	47-63Hz IP67	L244xW68xH39
	48V DC, DALI ¹⁾	69195	75W	100-305V	47-63Hz IP67
69196		100W	100-305V	47-63Hz IP67	L199xW63xH36
69197		150W	100-305V	47-63Hz IP67	L219xW63xH36
¹⁾ for a perfect dimming, it is necessary that the power supply is saturated to 100%					
48V DC, 1-10V and DALI	69096	55W	99-264V	50-60Hz IP20	L129xW76xH30
48V DC, 0-10V	69097	120W	90-305V	47-63Hz IP67	L191xW63xH38
24V DC listed	Consult B LIGHT North America Lighting Group Network T: 212.775.6363 E: info@lightinggroupnetwork.com				

INSERTO MEDIUM 40 CL SYSTEM

INSERTO MEDIUM 40 CL SYSTEM - WALL / CEILING MOUNTING

WALL = L 2312 mm / CEILING = L 3317 mm



WALL: L 2312 mm = 2027 mm + 285 mm
CEILING: L 3317 mm = 285 mm + 1005 mm + 2027 mm

