

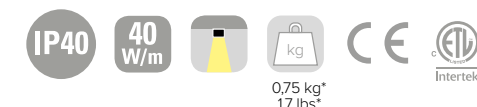
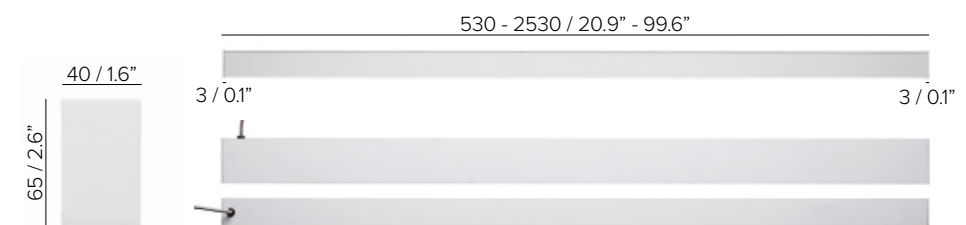


SATIN RECESSED DIFFUSER

INSERTO MEDIUM 65 CL

SPECIFICATIONS

base code	646
typology	Linear surface luminaire with symmetrical light distribution
mounting	On surface with suitable screws (included)
length	Available in nine lengths, from 530 to 2530 mm / from 20.9" to 99.6"
height	65 mm / 2.6"
width	40 mm / 1.6"
construction	Extruded aluminum fixture. End caps in turning and milling aluminum. Diffuser in polycarbonate
finishes	Anodized or powder coated when painted
ingress protection	IP40. North America dry location
lamp type	Linear LED array on printed circuit board. PCB L 250 mm / 9.8". PCB increment 250 mm / 9.8" - 2500 mm / 98.4" max. Custom dimensions on request. Remote power supply not included
LED pitch	4,1 mm / 0.2" (480 LEDs per meter)
lamp wattage	From 6W to 100W at 48V DC. North America 24V DC
lamp lumens	PCB L 250: 2700K CRI93 - 830lm, 3000K CRI93 - 830lm, 4000K CRI93 - 915lm
delivered lumens	PCB L 250: 470lm (3000K CRI93, satin) - 655lm (3000K CRI93, microprismatic)
lumen maintenance	50,000h L90
beam	Diffused or microprismatic
kelvin	2700K CRI93, 3000K CRI93 and 4000K CRI93 / 3 step MacAdam ellipse
special features	Reverse polarity protection - Two wires dimming. Diffuse and completely homogenous light distribution across the entire surface
dimming options	Push button, potentiometer, remote control, 1-10V, DALI, DMX, KNX. Dimming options depend on power supply and additional control units to be separately ordered as accessories
listings	CE, ETL listed for dry location



* weight based on 250 mm / 9.8"

INSERTO MEDIUM 65 CL

ORDER CODE

BASE CODE	A1 . LENGTH	A . POWER SUPPLY	B . KELVIN
646	52 530 mm	20 W	4 4000K CRI93 5 3000K CRI93 8 2700K CRI93
	53 780 mm	30 W	
	54 1030 mm	40 W	
	55 1280 mm	50 W	
	56 1530 mm	60 W	
	57 1780 mm	70 W	
	58 2030 mm	80 W	
	59 2280 mm	90 W	
	60 2530 mm	100 W	

8 48V DC power supply NOT included
R listed 24V DC power supply NOT included

Example: BASE CODE **646** A1 **52** A **8** B **5** C **A** D **6** = **64652-25A6**

C . DIFFUSER

- A** satin flush diffuser
- B** microprismatic flush diffuser
- C** satin recessed diffuser
- D** microprismatic recessed diffuser

D . FINISHES

- 1** grey anodized
- 6** white RAL 9003
- D** black anodized

INSERTO MEDIUM 65 CL

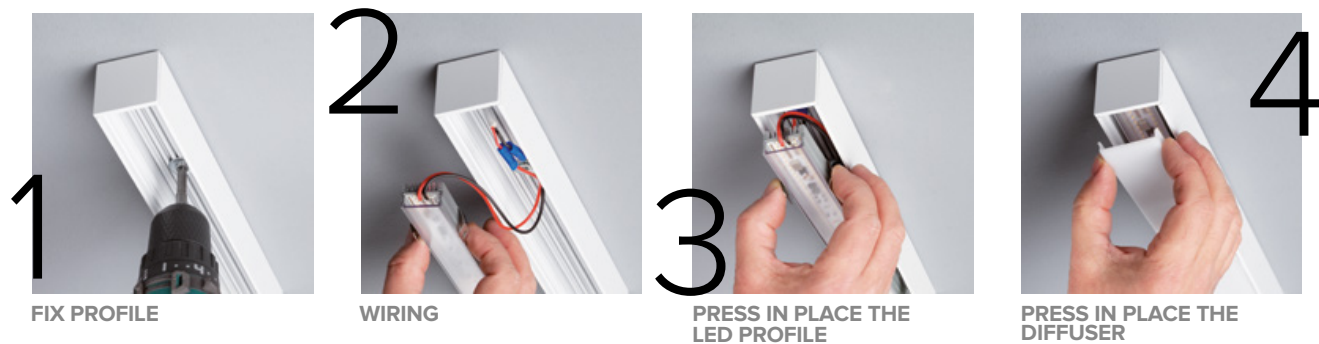
ACCESSORIES

REQUIRED ACCESSORIES - NOT INCLUDED

code	output power	input voltage / frequency	IP	dimensions mm
Power supply 48V DC, ON/OFF*				
69180	30W	90-264V	47-63Hz IP20	L160xW46xH30
69181	40W	90-305V	47-63Hz IP67	L163xW43xH32
69182	60W	90-305V	47-63Hz IP67	L163xW43xH32
69183	100W	90-264V	47-63Hz IP20	L201xW70xH35
69188	150W	90-305V	47-63Hz IP67	L228xW68xH39
69189	240W	90-305V	47-63Hz IP67	L244xW68xH39
Power supply 48V DC, 1-10V⁽¹⁾				
69185	40W	90-305V	47-63Hz IP67	L171xW62xH37
69186	60W	90-305V	47-63Hz IP67	L171xW62xH37
69187	100W	90-305V	47-63Hz IP67	L220xW68xH39
69188	150W	90-305V	47-63Hz IP67	L228xW68xH39
69189	240W	90-305V	47-63Hz IP67	L244xW68xH39
Power supply 48V DC, DALI⁽¹⁾				
69195	75W	100-305V	47-63Hz IP67	L180xW63xH36
69196	100W	100-305V	47-63Hz IP67	L199xW63xH36
69197	150W	100-305V	47-63Hz IP67	L219xW63xH36
¹ for a perfect dimming, it is necessary that the power supply is saturated to 100%				
Power supply 48V DC, 1-10V and DALI				
69096	55W	99-264V	50-60Hz IP20	L129xW76xH30
Power supply 48V DC, 0-10V				
69097	120W	90-305V	47-63Hz IP67	L191xW63xH38
Class 2 power supply 24V DC				

Consult **B LIGHT North America**
 Lighting Group Network
 T: 212.775.6363
 E: info@lightinggroupnetwork.com

MOUNTING: TWO PROFILES IN ONE FIXTURE FOR EASY FUTURE RE-LAMPING



*To choose the power supply, always add a spare 20% as safety margin.
 See pag 495 for cable size and max wiring distance from power supply to last connected luminaire