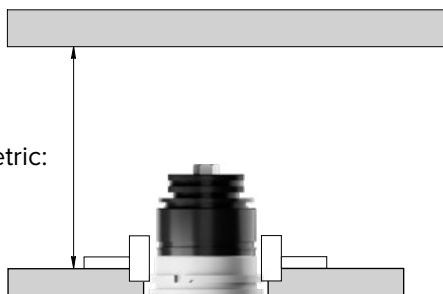


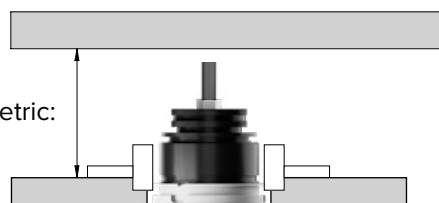
INSTALLATION

INSTALLATION WITH REMOTE LED DRIVER INSTALLAZIONE CON DRIVER REMOTO

H. MIN
Symmetric:
85 mm

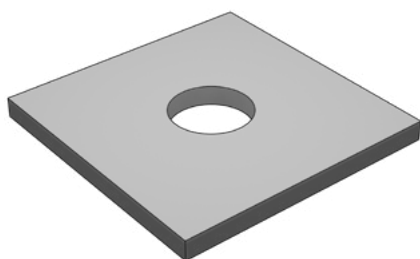


H. MIN
Asymmetric:
70 mm

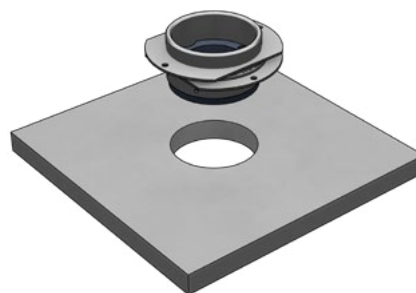


- 1 Make a hole in the wood panel.
Forare il pannello di legno.

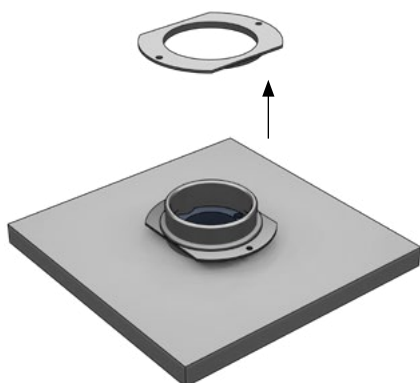
Ø60 mm / 2.36"



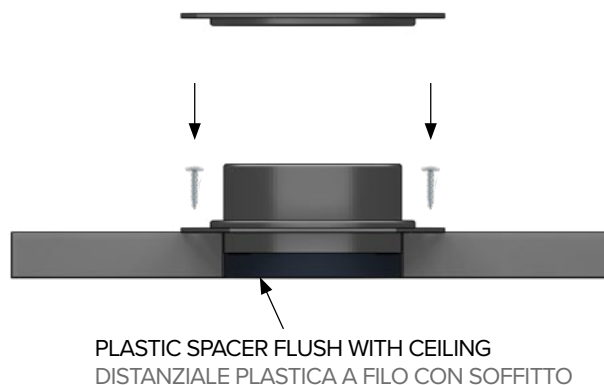
- 2 Fix the mounting frame from above the panel.
Fissare la controcassa da sopra il pannello.



- 3 Remove the upper bezel from the housing box and insert it into the hole.
Svitare l'anello di fissaggio superiore e inserire la controcassa.



- 4 Make sure the plastic spacer is flush with the ceiling and fix the mounting frame with screws.
Assicurarsi che il distanziale sia a filo con il soffitto e fissare la controcassa tramite viti.





MOUNTING FRAME FOR MILLWORK
69387
INSIDE 60 R

B LIGHT
DESIGNED TO PERFECTION

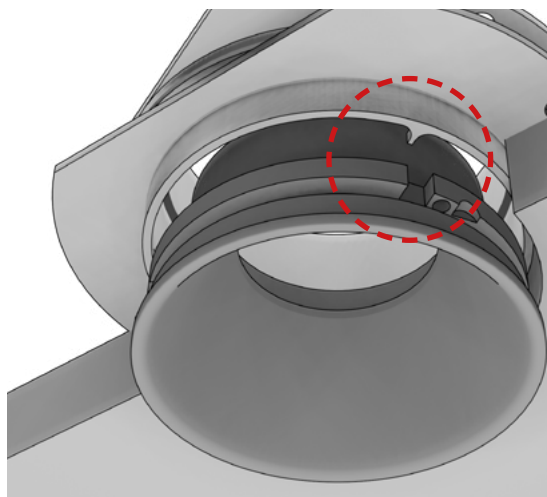
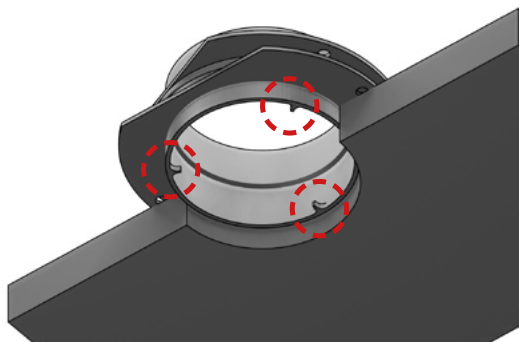
- 5** Screw back the bezel removed at step #2 to block the rotation.
Avvitare l'anello rimosso al punto #2 per bloccare la rotazione.



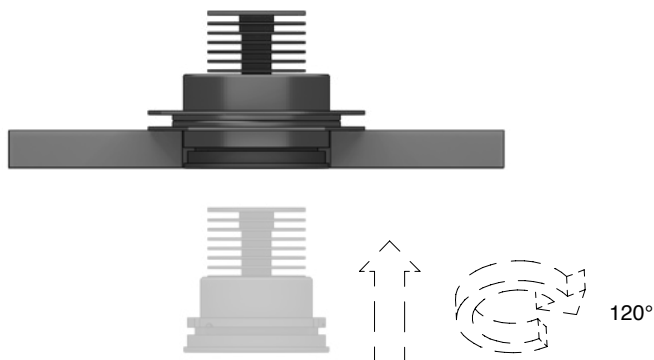
- 6** Remove the plastic spacer.
Rimuovere il distanziale in plastica.



- 7** Insert the luminaire in the housing box, paying attention that the three luminaire's slots match the three housing box's pivots.
Spingere l'apparecchio nella controcassa, facendo attenzione che le tre cave coincidano con i tre perni della controcassa.



- 8** Pushing the luminaire towards the housing box, rotate it clockwise until it stops.
Tenendo premuto l'apparecchio verso la controcassa, ruotarlo in senso orario fino al fermo.



- 9** Release the luminaire.
Rilasciare l'apparecchio.

