

INSIDE 60 R ^{NEW}

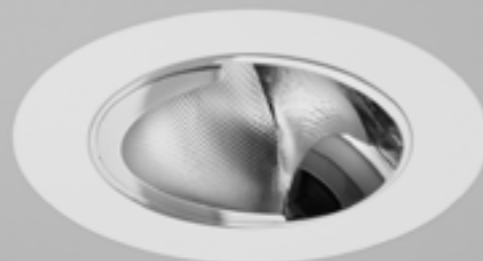


SPECIFICATIONS

base code	64142
typology	Compact glare free trimless downlight with symmetrical or asymmetrical (downlight 25° and wallwasher) light distribution
mounting	In plasterboard or millwork using mounting frame to be separately ordered
diameter	60 mm / 2.4"
height	Symmetrical: 70 mm / 2.8". Asymmetrical: 56 mm / 2.2"
required depth	Symmetrical: 85 mm / 3.3". Asymmetrical: 70 mm / 2.8"
first fit requirement	Yes, separate mounting frame. Mounting frame for plasterboard 13 mm / 0.5" (code 69371). Height adjustable mounting frame for plasterboard (code 69376). Mounting frame for plasterboard US market (code 69540). Mounting frame for millwork (code 69387)
ceiling cut out	Plasterboard: 65 mm / 2.56" (US Market: 75 mm / 2.95"). Millwork: 60 mm / 2.4"
construction	Fixture and mounting frame: turning and milling aluminum. Reflector: polycarbonate. Protective glass in PMMA or softening glass complete with silicone gasket
finishes	Powder coated. Heat sink anodized
ingress protection	IP30, IP44 or IP66. North America dry, damp or wet location
lamp type	COB. Remote power supply not included
lamp wattage	6W at 350 mA. Vf 17,8V DC.
lamp lumens	Tunable white: Maximum wattage 6W (CH1 + CH2 max 6W, one channel max 6W) 780lm
delivered lumens	IP30: 675lm (50°) - 700lm (70°) - 570lm (asymmetrical) IP44 / IP66: 610lm (50°) - 630lm (70°) - 510lm (asymmetrical)
lumen maintenance	50.000h L90
beam	50°, 70° or asymmetrical reflector (downlight 25° and wallwasher)
kelvin	2700K CRI93, 3000K CRI93, 4000K CRI93 / 3 step MacAdam ellipse or Tunable white (1800K - 4000K) CRI93
special features	Safe wiring - Two wires dimming. Thanks to the design of the reflector, the luminaire is totally glare free. UGR<19 (50°), UGR<25 (70°). The asymmetrical reflector offers longitudinal cut-off and delivers homogeneous light from the upper edge of the wall to the floor with no visible dark zones
dimming options	Push button, potentiometer, 0-10V, DALI, DMX, KNX. Dimming options depend on power supply and additional control units to be separately ordered as accessories
listings	CE, ETL listed for wet location



SYMMETRICAL



ASYMMETRICAL



IP30 IP44 IP66
symmetric asymmetric
plaster plaster US Market millwork
kg CE ETL Intertek

85 mm / 3.3" 70 mm / 2.8" 65 mm / 2.56" 75 mm / 2.95" 60 mm / 2.36" 0.2 kg / 0.4 lbs

ASYMMETRICAL DOWNLIGHTS

AVAILABLE OPTIONS FOR DIFFERENT CEILING HEIGHTS



INSIDE 120 R
30W, 2440lm delivered

SEE PAGE 391



ATRIA X3 R
30W, 2440lm delivered

SEE PAGE 459



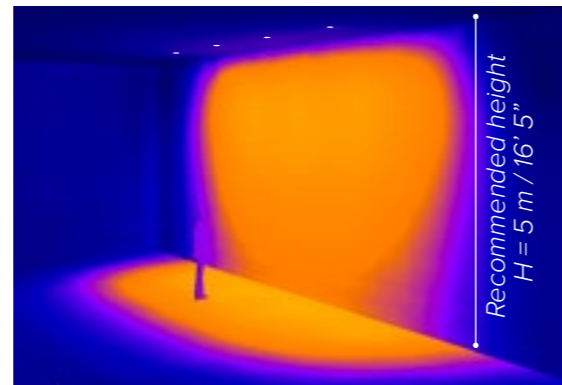
INSIDE 120 R
23W, 2025lm delivered

SEE PAGE 391



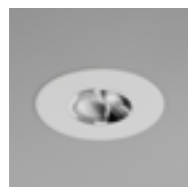
ATRIA X3 R
23W, 2025lm delivered

SEE PAGE 459



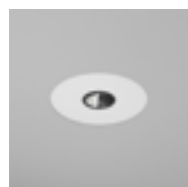
INSIDE 75 R
10W, 870lm delivered

SEE PAGE 381



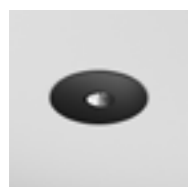
ATRIA XS R
10W, 870lm delivered

SEE PAGE 437



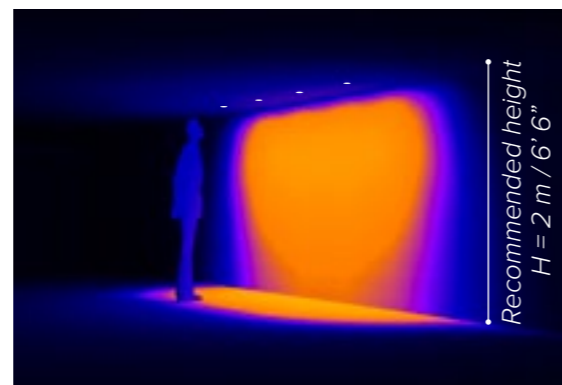
INSIDE 40 R
4W, 220lm delivered

SEE PAGE 367



DOT 45
4W, 220lm delivered

SEE PAGE 425



20lx 50lx 100lx 200lx

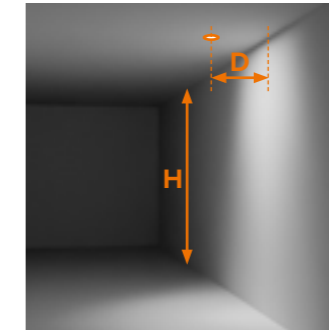
INSIDE 60 R

INSTALLATION GUIDE FOR THE ASYMMETRICAL DOWNLIGHT (DOWNLIGHT 25° AND WALLWASHER)

FOR A GOOD UNIFORMITY OF LIGHT ON THE WALL, FOLLOW THESE RULES:

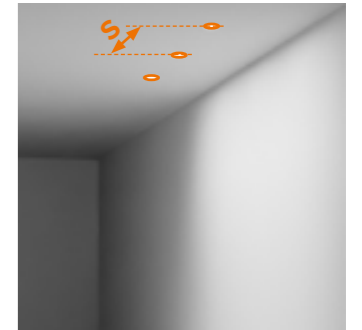
1

The **distance from the wall (D)** shall be minimum H/5 and maximum H/3



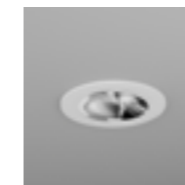
2

The **spacing between luminaires (S)** shall be minimum the distance (D) from the wall and maximum twice the distance (D x 2) from the wall



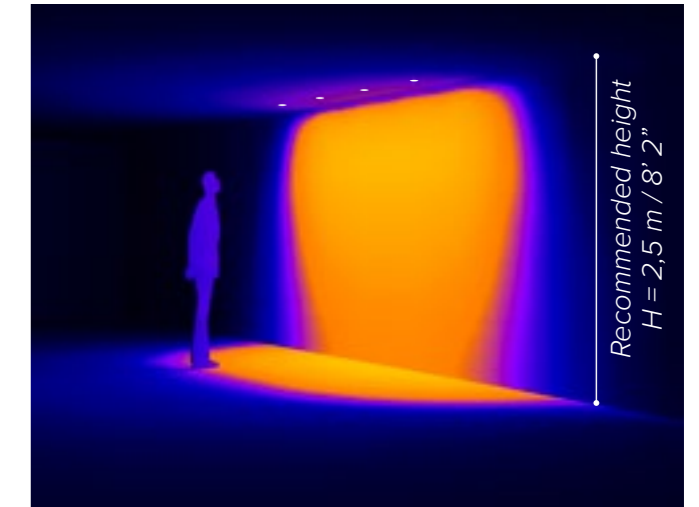
INSIDE 60 R
6W, 510lm delivered

H 2,5 m 8' 2"	D _{MIN} 0,5 m 1' 7"	S _{MIN} 0,5 m 1' 7"
		S _{MAX} 1 m 3' 3"
	D _{MAX} 0,8 m 2' 7"	S _{MIN} 0,8 m 2' 7"
		S _{MAX} 1,6 m 5' 3"



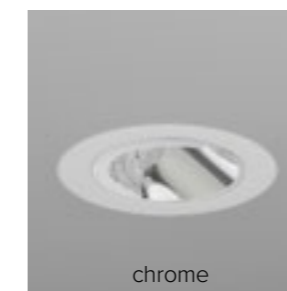
ATRIA 60 P
6W, 570lm delivered

SEE PAGE 431



20lx 50lx 100lx 200lx

ASYMMETRICAL BEAM (see "ORDER CODE" next page)



INSIDE 60 R

ORDER CODE

BASE CODE

64142







A . POWER SUPPLY

- L 350 mA power supply NOT included
- U  listed 350 mA power supply NOT included

B . KELVIN

- 4 4000K CRI93
- 5 3000K CRI93
- 8 2700K CRI93
- 7 tunable white 1800K - 4000K CRI93

C . BEAM

- 5 flood 50° 
- G flood 50°, softening glass 
- 8 wide flood 70°
- H wide flood 70°, softening glass 
- A chrome asymmetrical 
- B white asymmetrical 
- C black asymmetrical 

BASE CODE

Example: **64142 L 8 A 6 C** = **64142-L8A6C**

D . FINISHES

6 white RAL 9003 

2 black RAL 9005 

E . OTHER

- A IP30
- B IP44
- C IP66

ACCESSORIES

REQUIRED ACCESSORIES - NOT INCLUDED

code	description	dimensions mm
69371	mounting frame for plasterboard 13 mm / 0.5"	Ø65xH13
69376	height adjustable mounting frame for plasterboard from 10 to 30 mm / from 0.4" to 1.2"	Ø65xH10-30
69540	mounting frame for plasterboard US market	Ø65xH13
69387	mounting frame for millwork	Ø60xH30

code	output power	input voltage / frequency	IP	dimensions mm
69107	ON/OFF, 10W / max 1	198-264V	50-60Hz	IP20 L100xW43XH23
69090	1-10V, 18W / max 2	99-264V	50-60Hz	IP20 L120xW52XH22
69079	DALI, 15W / max 2	110-240V	50-60Hz	IP20 L120xW52xH22
69205	DALI, 17W / max 2	99-264V	50-60Hz	IP67 L122xW54xH26
69118	DALI DT8, 17,5W / max 2	198-264V	50-60Hz	IP20 L123xW79XH30

Power supply 350 mA max No. fixtures

Power supply for Tunable white 350 mA max No. fixtures

Class 2 power supply 350 mA

Consult **B LIGHT North America**
Lighting Group Network
T: 212.775.6363
E: info@lightinggroupnetwork.com

Power supply selection		
DC MIN Output (Vf)	LED (Vf)	DC MAX Output (Vf)
< 17,8V	< 17,8V	< 17,8V

