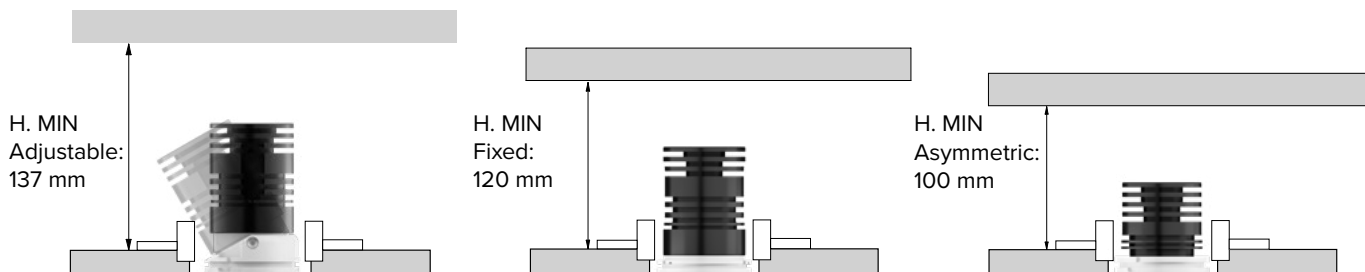
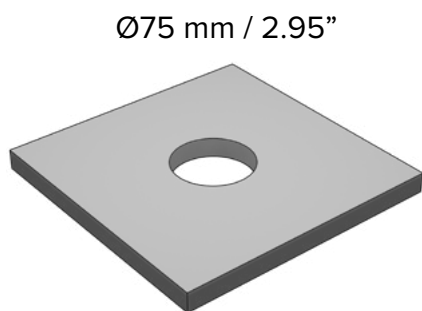


INSTALLATION

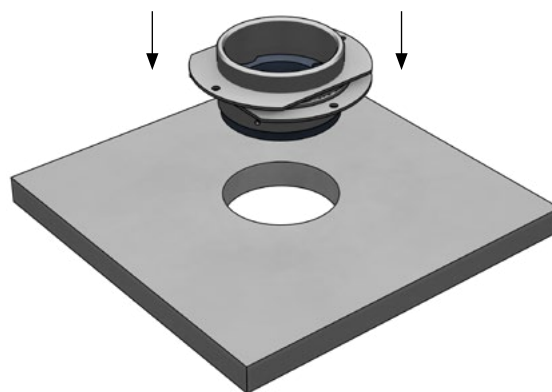
INSTALLATION WITH REMOTE LED DRIVER INSTALLAZIONE CON DRIVER REMOTO



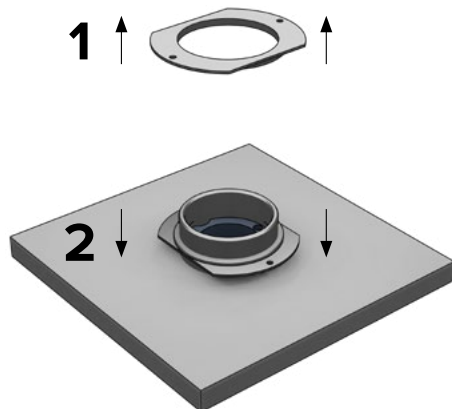
- 1 Make a hole in the wood panel and remove any burr.
Forare il pannello di legno e rimuovere eventuali bave.



- 2 Fix the mounting frame from above the panel.
Fissare la controcassa da sopra il pannello.



- 3 Remove the upper bezel from the housing box and insert it into the hole.
Svitare l'anello di fissaggio superiore e inserire la controcassa.



- 4 Make sure the plastic spacer is flush with the ceiling and fix the mounting frame with screws.
Assicurarsi che il distanziale sia a filo con il soffitto e fissare la controcassa tramite viti.

