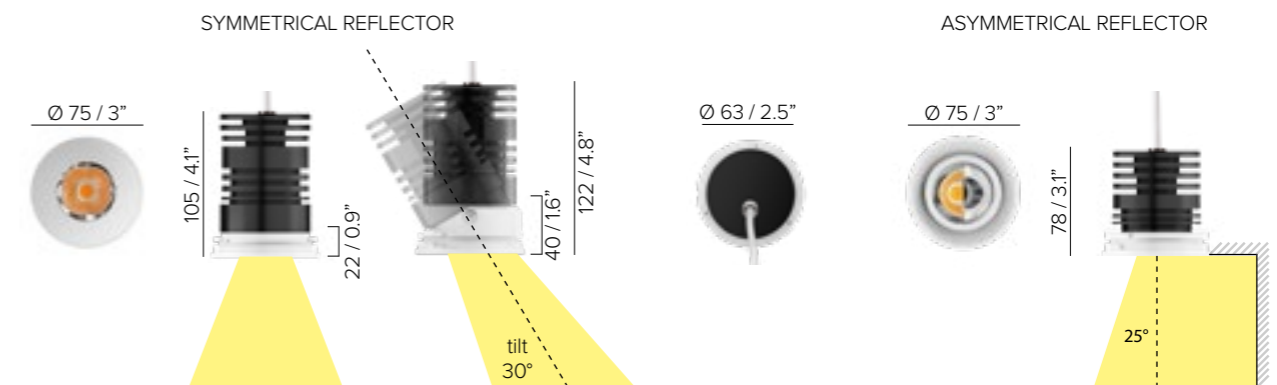




INSIDE 75 R

SPECIFICATIONS

base code	64144
typology	Glare free trimless downlight with symmetrical or asymmetrical (downlight 25° and wallwasher) light distribution
mounting	In plasterboard using mounting frame to be separately ordered
aperture	75 mm / 3"
height	Fixed: 105 mm / 4.1". Adjustable: 122 mm / 4.8". Asymmetrical: 78 mm / 3.1"
required depth	Fixed: 120 mm / 4.7". Adjustable: 137 mm / 5.4". Asymmetrical: 100 mm / 3.9"
first fit requirement	Yes, separate mounting frame. Mounting frame for plasterboard 13 mm / 0.5" (code 69372). Height adjustable mounting frame for plasterboard (code 69377). Mounting frame for plasterboard US market (code 69541). Mounting frame for millwork (code 69388)
ceiling cut out	Plasterboard: 80 mm / 3.15" (US Market: 90 mm / 3.54"). Millwork: 75 mm / 2.95"
construction	Fixture and mounting frame: turning and milling aluminum. Reflector: polycarbonate. Protective glass in PMMA or softening glass
finishes	Powder coated. Heat sink anodized
ingress protection	IP30, IP44 or IP66. North America dry, damp or wet location
lamp type	COB. Remote power supply not included
lamp wattage	10W at 500mA. Vf 17,8V DC. Tunable white: Maximum wattage 10W (CH1 + CH2 max 10W, one channel max 10W)
lamp lumens	1150lm
delivered lumens	IP30: 850lm (30°) - 930lm (50°) - 970lm (70°) - 790lm (asymmetrical) IP44 / IP66: 760lm (30°) - 840lm (50°) - 870lm (70°) - 710lm (asymmetrical)
lumen maintenance	50.000h L90
beam	30°, 50°, 70° or asymmetrical reflector (downlight 25° and wallwasher). Inclination angle adjustable up to 30°
kelvin	2700K CRI93, 3000K CRI93, 4000K CRI93 / 3 step MacAdam ellipse or Tunable white (1800K - 4000K) CRI93
special features	Safe wiring - Two wires dimming. Designed with symmetrical and asymmetrical reflectors, delivers glare free homogeneous light. UGR<10 (30°), UGR<19 (50°), UGR<25 (70°). The asymmetrical reflector offers longitudinal cut-off and delivers homogeneous light from the upper edge of the wall to the floor with no visible dark zones
dimming options	Push button, potentiometer, 0-10V, DALI, DMX, KNX. Dimming options depend on power supply and additional control units to be separately ordered as accessories
listings	CE, ETL listed for wet location



IP30 IP44 IP66
adjustable fixed asymmetric millwork plaster plaster US Market
kg CE ETL Intertek

+/- 30° 137 mm / 5.4" 120 mm / 4.7" 100 mm / 3.9" 75 mm / 2.95" 80 mm / 3.15" 90 mm / 3.54" 0,5 kg / 1,1 lbs

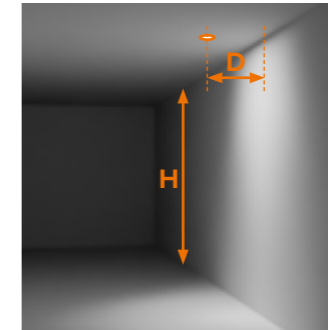
INSIDE 75 R

INSTALLATION GUIDE FOR THE ASYMMETRICAL DOWNLIGHT (DOWNLIGHT 25° AND WALLWASHER)

FOR A GOOD UNIFORMITY OF LIGHT ON THE WALL, FOLLOW THESE RULES:

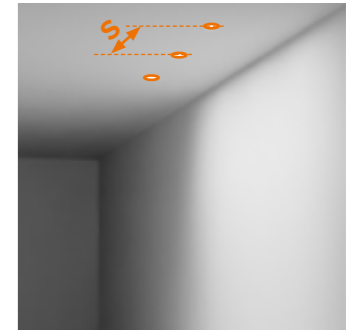
1

The **distance from the wall (D)** shall be minimum H/5 and maximum H/3



2

The **spacing between luminaires (S)** shall be minimum the distance (D) from the wall and maximum twice the distance (D x 2) from the wall



INSIDE 75 R 10W, 870lm delivered

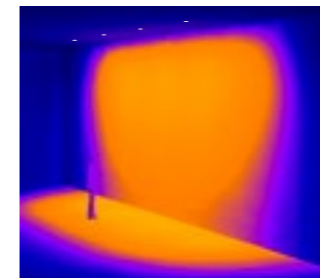
H 3 m 9' 10"	D _{MIN} 0,6 m 1' 11"	S _{MIN} 0,6 m 1' 11"
		S _{MAX} 1,2 m 3' 11"
	D _{MAX} 1 m 3' 3"	S _{MIN} 1 m 3' 3"
		S _{MAX} 2 m 6' 7"



20lx 50lx 100lx 200lx

ASYMMETRICAL DOWNLIGHTS: AVAILABLE OPTIONS FOR DIFFERENT CEILING HEIGHTS

Recommended height
H = 5 m / 16' 5"



INSIDE 120 R
23W, 2025lm delivered
SEE PAGE 391

ATRIA X3 R
23W, 2025lm delivered
SEE PAGE 459

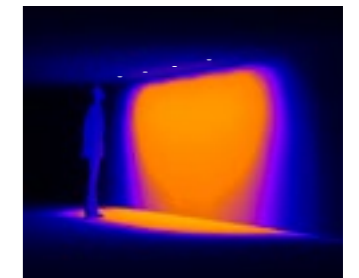
Recommended height
H = 2,5 m / 8' 2"



INSIDE 60 R
6W, 570lm delivered
SEE PAGE 375

ATRIA 60 P
6W, 510lm delivered
SEE PAGE 431

Recommended height
H = 2 m / 6' 6"



INSIDE 40 R
4W, 220lm delivered
SEE PAGE 367

DOT 45
4W, 220lm delivered
SEE PAGE 425

ASYMMETRICAL REFLECTORS (DOWNLIGHT 25° AND WALLWASHER) AND SYMMETRICAL REFLECTOR (30°)

INSIDE 75 R

ORDER CODE

BASE CODE
64144

A . POWER SUPPLY
L 500 mA power supply NOT included
U listed 500 mA power supply NOT included

B . KELVIN
4 4000K CRI93
5 3000K CRI93
8 2700K CRI93
7 tunable white 1800K - 4000K CRI93

C . BEAM
4 spot 30°
F spot 30°, softening glass
5 flood 50°
G flood 50°, softening glass
8 wide flood 70°
H wide flood 70°, softening glass
A chrome asymmetrical
C black asymmetrical

D . FINISHES
2 black RAL 9005
6 white RAL 9003

E . OTHER
A IP30
B IP44
C IP66

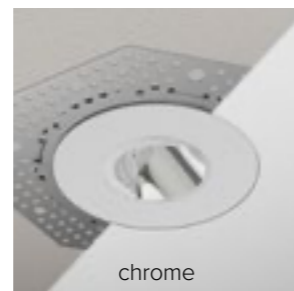
F . ADJUSTABILITY
A fixed
B adjustable IP30 only "4" spot 30" option only

Example: BASE CODE **64144** A **L** B **8** C **A** D **6** E **B** F **A** = **64144-L8A6BA**

ASYMMETRICAL BEAM



ASYM. BEAM (NORTH AMERICA)



INSIDE 75 R

ACCESSORIES

REQUIRED ACCESSORIES - NOT INCLUDED



code	description	dimensions mm
69372	mounting frame for plasterboard 13 mm / 0.5"	Ø80xH13
69377 ¹	height adjustable mounting frame for plasterboard from 10 to 30 mm / from 0.4" to 1.2"	Ø80xH10-30
69541	mounting frame for plasterboard US market	Ø80xH13
69388 ¹	mounting frame for millwork	Ø75xH30
69592	suction cup for asymmetrical IP44/IP66 US market	W50xH40

¹not available for the adjustable version

code	output power	input voltage / frequency	IP	dimensions mm
69109	ON/OFF, 10W / max 1	198-264V	50-60Hz IP20	L100xW43XH23
69091	1-10V, 20W / max 2	99-264V	50-60Hz IP20	L120xW52XH22
69080	DALI, 20W / max 2	220-240V	50-60Hz IP20	L120xW52xH22
69206	DALI, 24W / max 2	99-264V	50-60Hz IP67	L122xW54xH26
69119	DALI DT8, 25W / max 2	198-264V	50-60Hz IP20	L123xW79XH30

Power supply 500 mA max No. fixtures
 Power supply for Tunable white 500 mA max No. fixtures
 Class 2 power supply 500 mA

Power supply selection		
DC MIN Output (Vf)	LED	DC MAX Output (Vf)
< 17,8V	<	<

Consult **B LIGHT North America**
 Lighting Group Network
 T: 212.775.6363
 E: info@lightinggroupnetwork.com