

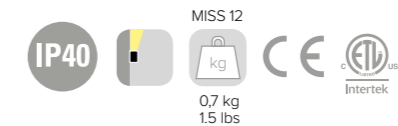
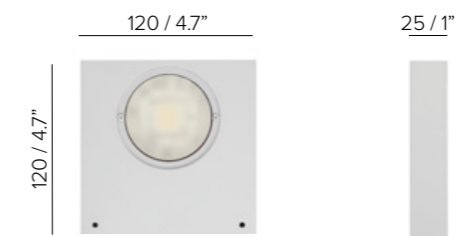


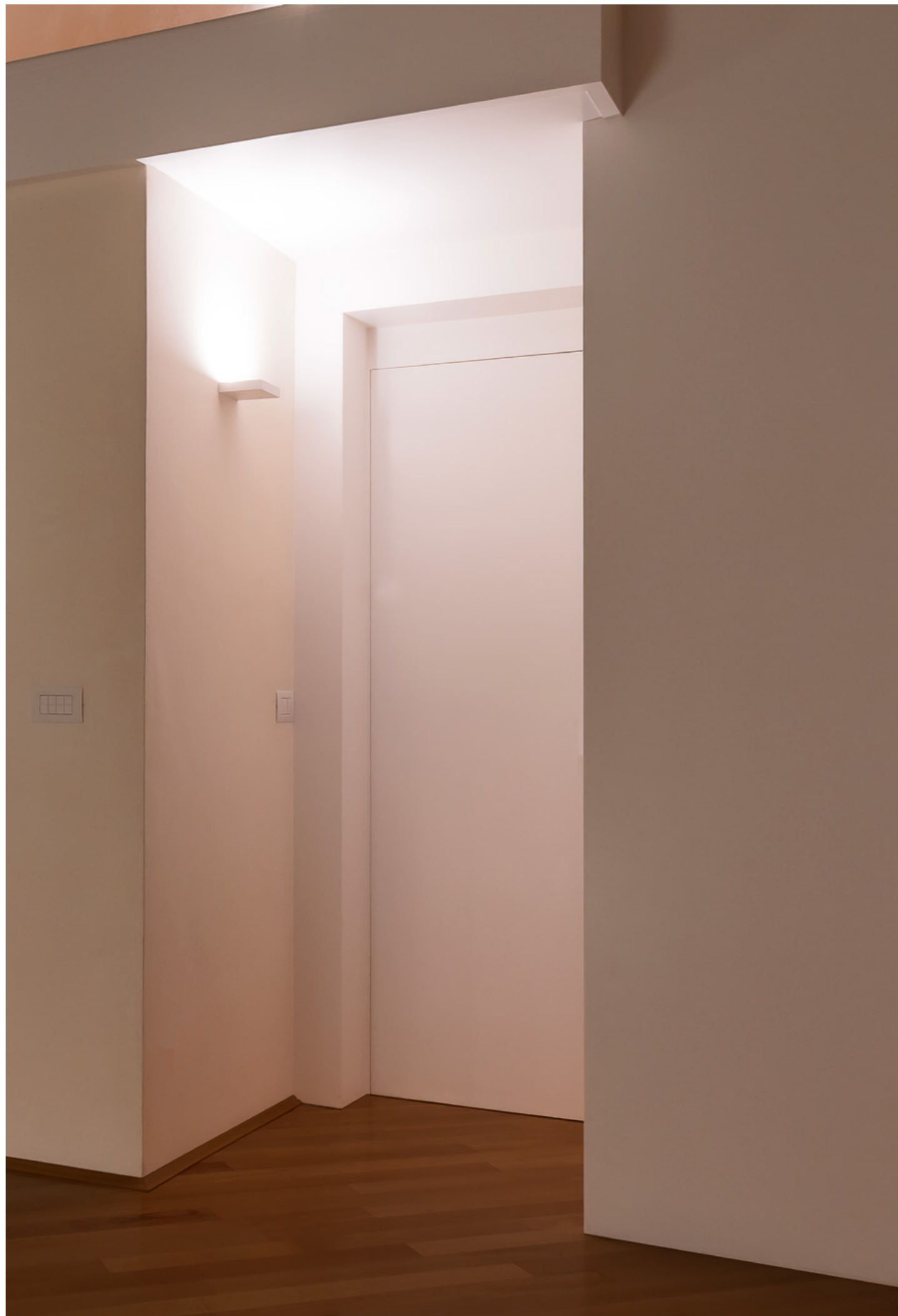
MISS LIGHT 12



SPECIFICATIONS

base code	64431
typology	Wall luminaire with light emission on one side
mounting	To wall using mounting plate
width	120 mm / 4.7"
height	25 mm / 1"
depth	120 mm / 4.7"
construction	Milling aluminum
finishes	Powder coated
ingress protection	IP40. North America dry location
lamp type	COB. Remote power supply not included
lamp wattage	12W at 48V DC and 350 mA
lamp lumens	1500lm
delivered lumens	1400lm
lumen maintenance	50.000h L90
kelvin	2700K CRI93, 3000K CRI93 and 4000K CRI93 / 3 step MacAdam ellipse
special features	48V DC: unpolarized electronic system - Thermal Sensor - Safe wiring
dimming options	Push button, potentiometer, 0-10V, DALI, DMX, KNX. Dimming options depend on power supply and additional control units to be separately ordered as accessories
listings	CE, ETL listed for dry location





MISS LIGHT 12

ORDER CODE

BASE CODE	A . POWER SUPPLY	B . KELVIN	C . DIFFUSER
64431	8 48V DC power supply NOT included L 350 mA power supply NOT included S listed 48V DC power supply NOT included U listed 350 mA power supply NOT included	4 4000K CRI93 5 3000K CRI93 8 2700K CRI93	1 PMMA

Example: BASE CODE **64431** A **8** B **8** C **1** D **6** = **64431-8816**

D . FINISHES

2 black RAL 9005		6 white RAL 9003	
-------------------------	--	-------------------------	--

ACCESSORIES

REQUIRED ACCESSORIES - NOT INCLUDED

	code	output power	input voltage / frequency	IP	dimensions mm
Power supply 48V DC*, ON/OFF	69180	30W	90-264V	47-63Hz IP20	L160xW46xH30
	69181	40W	90-305V	47-63Hz IP67	L163xW43xH32
	69182	60W	90-305V	47-63Hz IP67	L163xW43xH32
	69183	100W	90-264V	47-63Hz IP20	L201xW70xH35
	69188	150W	90-305V	47-63Hz IP67	L228xW68xH39
	Power supply 350 mA max No. fixtures	69086	ON/OFF, 15W / max 1	90-264V	50-60Hz IP20
69090		1-10V, 18W / max 1	99-264V	50-60Hz IP20	L120xW52xH22
69079		DALI, 15W / max 1	110-240V	50-60Hz IP20	L120xW52xH22
Class 2 power supply 48V DC 350 mA	Consult B LIGHT North America Lighting Group Network T: 212.775.6363 E: info@lightinggroupnetwork.com				