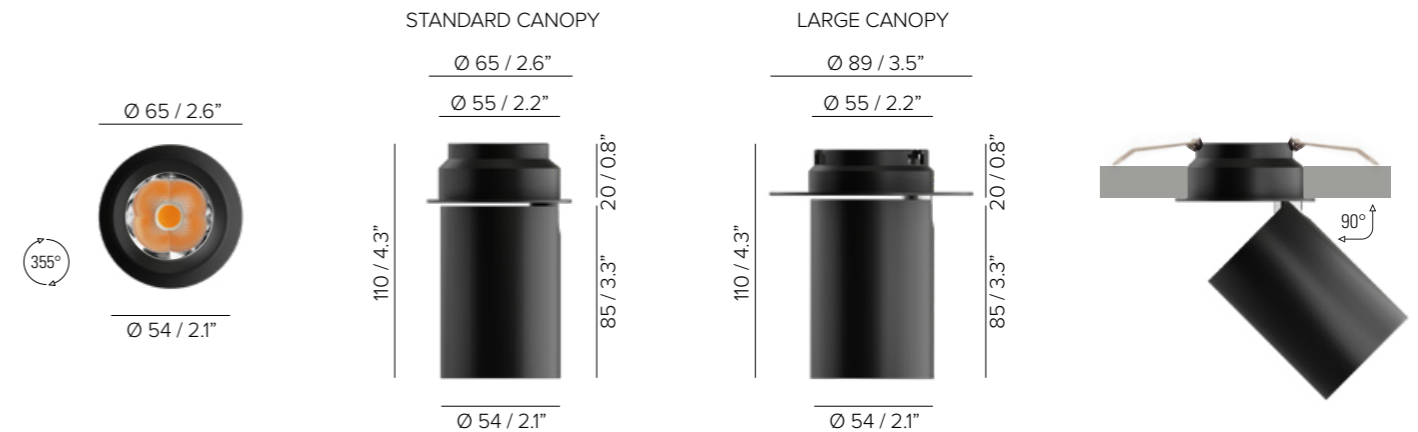
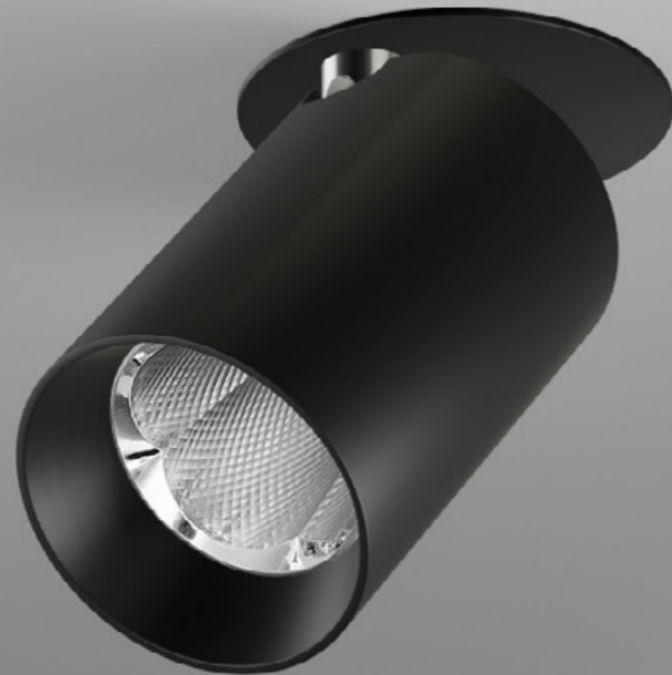


OKKIO 55 ADP NEW



SPECIFICATIONS

base code	67146
typology	Recessed mounting luminaire with adjustable light distribution
mounting	In plasterboard using springs (included)
diameter	Cylinder: 54 mm / 2.1". Canopy: 65 mm / 2.6" (standard) or 89 mm / 3.5" (large)
height	110 mm / 4.3"
required depth	40 mm / 1.6"
ceiling cut out	57 mm / 2.24"
construction	Fixture and bezel: turning and milling aluminum. Reflector: polycarbonate
finishes	Powder coated
ingress protection	IP30. North America dry location
lamp type	COB. Remote power supply not included
lamp wattage	10W at 500 mA. Vf 17,8V DC. Tunable white: Maximum wattage 10W (CH1 + CH2 max 10W, one channel max 10W)
lamp lumens	1150lm
delivered lumens	850lm (30°) - 930lm (50°)
lumen maintenance	50.000h L90
beam	30° or 50° 355° rotation and 90° tilt. Rotation via base and toolless adjustment that hold position with precision
kelvin	2700K CRI93, 3000K CRI93, 4000K CRI93 / 3 step MacAdam ellipse or Tunable white (1800K - 4000K) CRI93
special features	Safe wiring - Two wires dimming. Designed with high performance reflectors, delivers glare free homogeneous light. UGR<10 (30°), UGR<19 (50°)
dimming options	Push button, potentiometer, 0-10V, DALI, DMX, KNX. Dimming options depend on power supply and additional control units to be separately ordered as accessories
listings	CE, ETL listed for dry location





OKKIO 55 ADP


ORDER CODE

BASE CODE

67146

A . POWER SUPPLY

L 500 mA power supply NOT included

U  listed 500 mA power supply NOT included

B . KELVIN

4 4000K CRI93

5 3000K CRI93

8 2700K CRI93

7 tunable white 1800K - 4000K CRI93

C . BEAM

4 spot 30°


5 flood 50°

Example: BASE CODE **67146** A **L** B **8** C **4** D **6** E **A** = **67146-L846A**

D . FINISHES

2 black RAL 9005 

6 white RAL 9003 

F golden bronze 

E . MOUNTING OPTIONS

A recessed standard canopy

B recessed large canopy

ACCESSORIES

REQUIRED ACCESSORIES - NOT INCLUDED

	code	output power	input voltage / frequency	IP	dimensions mm
Power supply 500 mA max No. fixtures	69109	ON/OFF, 10W / max 1	198-264V	50-60Hz IP20	L100xW43xH23
	69091	1-10V, 20W / max 2	99-264V	50-60Hz IP20	L120xW52xH22
	69080	DALI, 20W / max 2	220-240V	50-60Hz IP20	L120xW52xH22
	69206	DALI, 24W / max 2	99-264V	50-60Hz IP67	L122xW54xH26
Power supply for Tunable white 500 mA max No. fixtures	69119	DALI DT8, 25W / max 2	198-264V	50-60Hz IP20	L123xW79xH30
Class 2 power supply 500 mA	Consult B LIGHT North America Lighting Group Network T: 212.775.6363 E: info@lightinggroupnetwork.com				

Power supply selection		
DC MIN Output (Vf)	LED (Vf)	DC MAX Output (Vf)
< 17,8V	< 17,8V	< 17,8V