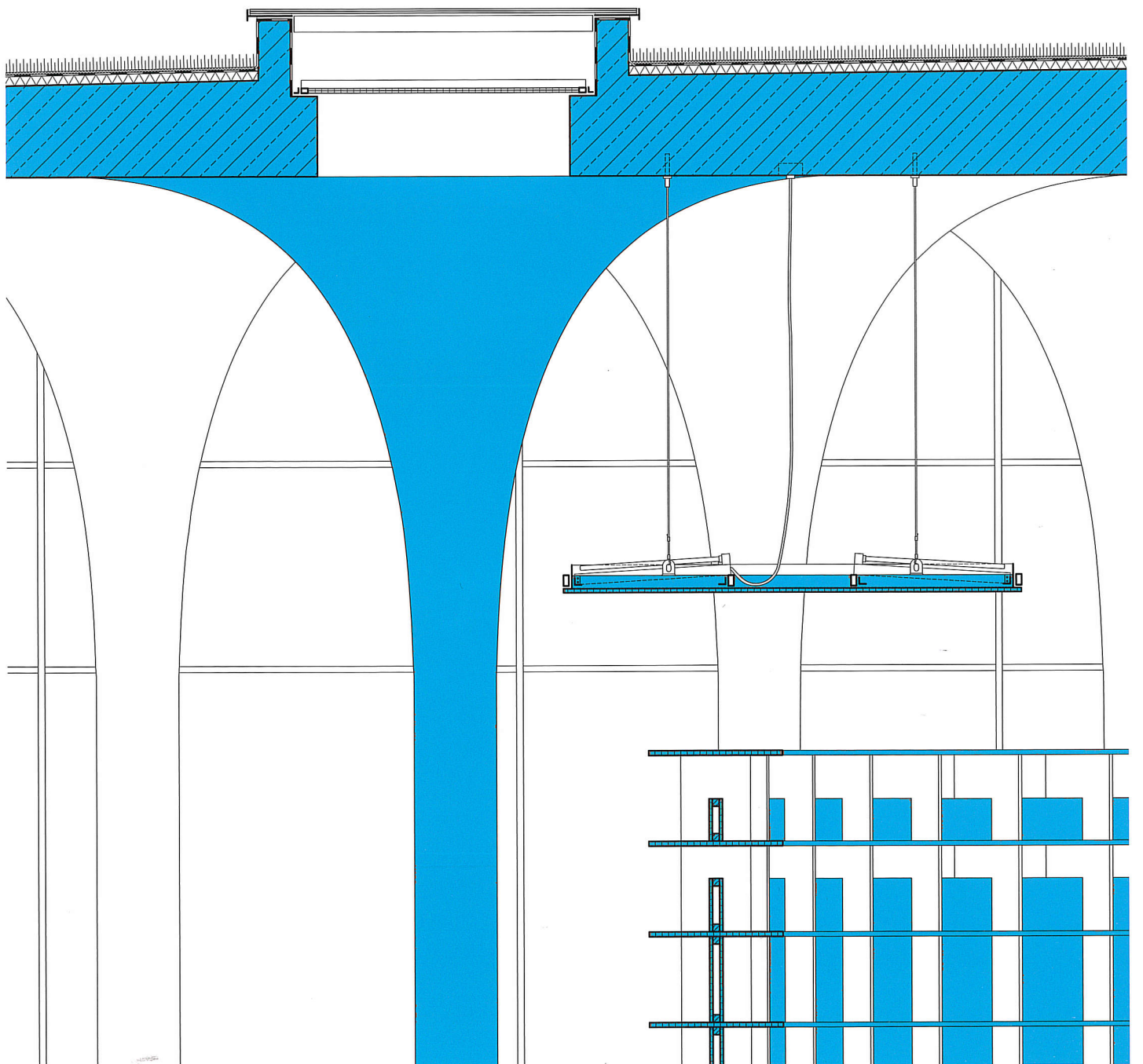


English Edition

DETAIL

Review of Architecture and Construction Details · Lighting and Interiors · Vol. 2016 · 4



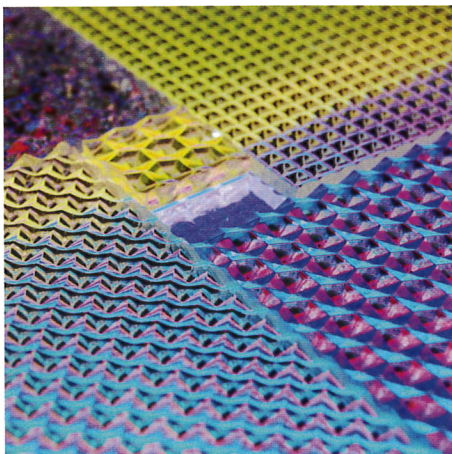
Lights and Lighting

Altered images

Surface design company Lumiscopic has introduced a collection of bespoke illuminated surfaces featuring dichroic film from 3M. The light-responsive surfaces change colour depending on the viewing angle, projecting a vibrant spectrum of warm or cool coloured light. "It has inspired me to create amazing effects with my artwork that might not have otherwise been possible," said designer and owner Lisa Alcock. "The aim of my exclusive collection is to produce a 'wow' effect – stopping passers-by in their tracks, and generating an energising and uplifting ambience."

Dichroic Glass Finishes DF-PA Blaze shifts from warm tones of cyan, blue and magenta to red and gold, whilst DF-PA Chill changes from the transmissive cool tones of blue, magenta and yellow to the reflective colours of gold and blue. Films can be applied to glass, plastic or acrylic surfaces, from feature wall panels and large-scale lighting panels to worktops, shelving and furniture as a visual opaque or decorative graphic, easily removed without damaging surfaces.

□ 3M Commercial Graphics
United Kingdom
☎ +44 (0)800 121 4739
www.3M.co.uk



Winning scheme

Lighting solutions from B Light were specified for Casino Lugano in Switzerland for its major refurbishment. The lighting needs were complex, due to a rationalisation of spaces, the general restructuring of existing systems and a need for highlighting various areas with differing lighting solutions; in addition, the existence of many surveillance cameras required an efficient means of neutralising the effect of horizontal lines that switched-on LEDs can cause on film.

Mushroom Small T luminaires with magnetic bases were installed on The Magnet Track, a surface-mounted track, over the tables. Featuring a 355° adjustment on the horizontal plane and 90° on the vertical plane, with high-frequency PWM dimming and high chromatic output, these are said to enable perfect video recordings and allow cameras to identify cards and their colour, as well as chips, to monitor potential cheating. Linear Tube 112 Slim dimmable luminaires in custom lengths were used in the gaming room: the suspended fittings partially overlie, giving a diffuse light over the area.

□ B Light
Italy
☎ +39 (0)434 630 835
www.b-light.it/en



Joined-up thinking

Working from her London studio in the King's Road in Chelsea, Paula Goodburn sources work from innovative artisans who marry traditional techniques with contemporary design. The handmade creations have provenance and their own individual stories, making them either unique or part of limited editions. Accessories include lighting, ceramics, wood and bronze pieces and soft furnishings, all individually sourced from South Africa, where Paula was born.

The distinctive light fitting shown here is the Protea by Willowlamp, an award-winning South African lighting company. The chandelier can be ceiling-mounted or hung from a pendant. The company's designs fuse organic forms with high-tech materials and are based on a patented method of attaching ball chain to laser-cut steel frames. This 'chain curtain' system has endless design possibilities, ranging from very simple, sleek lampshades to highly complex sculptural art forms and custom chandeliers for larger residential or commercial projects at the high end of the market.

□ Porcupine Rocks
United Kingdom
☎ +44 (0)20 7351 2584
www.porcupinerocks.com

